

## Product datasheet for **TA333613**

### COA8 Rabbit Polyclonal Antibody

#### Product data:

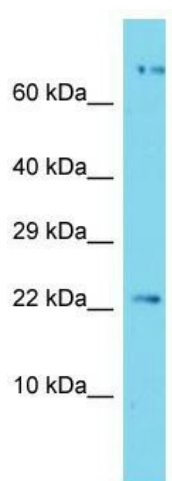
Product Type:	Primary Antibodies
Applications:	WB
Recommended Dilution:	WB
Reactivity:	Human
Host:	Rabbit
Isotype:	IgG
Clonality:	Polyclonal
Immunogen:	The immunogen for Anti-APOPT1 Antibody is: synthetic peptide directed towards the C-terminal region of Human APOPT1. Synthetic peptide located within the following region: KEFLSKNFQKHMYYNRDWYKRNFAITFFMGKVALERIWNKQKQKKRSN
Formulation:	Liquid. Purified antibody supplied in 1x PBS buffer with 0.09% (w/v) sodium azide and 2% sucrose. <i>Note that this product is shipped as lyophilized powder to China customers.</i>
Purification:	Affinity Purified
Conjugation:	Unconjugated
Storage:	Store at -20°C as received.
Stability:	Stable for 12 months from date of receipt.
Predicted Protein Size:	20 kDa
Gene Name:	apoptogenic 1, mitochondrial
Database Link:	<a href="#">NP_115750</a> <a href="#">Entrez Gene 84334 Human Q96IL0</a>
Background:	APOPT1 plays a role in the regulation of apoptosis. It mediates mitochondria-induced cell death in vascular smooth muscle cells through the release of cytochrome c from mitochondria, followed by the activation of the caspase cascade.
Synonyms:	APOP; APOP1; C14orf153
Note:	Immunogen sequence homology: Human: 100%; Horse: 82%; Bovine: 82%



[View online »](#)

Protein Families: Secreted Protein

### Product images:



Host: Rabbit; Target Name: APOPT1; Sample  
Tissue: Jurkat Whole Cell lysates; Antibody  
Dilution: 1.0 ug/ml.