

Product datasheet for **TA333612**

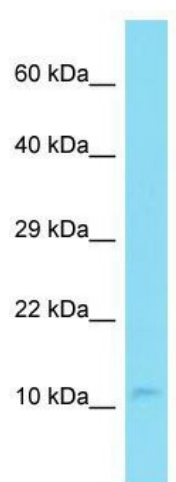
C14orf142 (GON7) Rabbit Polyclonal Antibody

Product data:

Product Type:	Primary Antibodies
Applications:	WB
Recommended Dilution:	WB
Reactivity:	Human
Host:	Rabbit
Isotype:	IgG
Clonality:	Polyclonal
Immunogen:	The immunogen for Anti-C14orf142 Antibody is: synthetic peptide directed towards the C-terminal region of Human C14orf142. Synthetic peptide located within the following region: LVQGEVQHRVAAAPDEDLGDDEDDAEDENNIDNRTNFDGPSAKRPKTPS
Formulation:	Liquid. Purified antibody supplied in 1x PBS buffer with 0.09% (w/v) sodium azide and 2% sucrose. <i>Note that this product is shipped as lyophilized powder to China customers.</i>
Purification:	Affinity Purified
Conjugation:	Unconjugated
Storage:	Store at -20°C as received.
Stability:	Stable for 12 months from date of receipt.
Predicted Protein Size:	11 kDa
Gene Name:	chromosome 14 open reading frame 142
Database Link:	NP_115879 Entrez Gene 84520 Human Q9BXV9
Background:	The function of this protein remains unknown.
Synonyms:	PNAS-127
Note:	Immunogen sequence homology: Human: 100%; Rat: 91%; Mouse: 91%; Dog: 86%; Horse: 86%; Bovine: 86%; Pig: 79%



[View online »](#)

Product images:

Host: Rabbit; Target Name: C14orf142; Sample
Tissue: Jurkat Whole Cell lysates; Antibody
Dilution: 1.0 ug/ml.