

## Product datasheet for **TA333610**

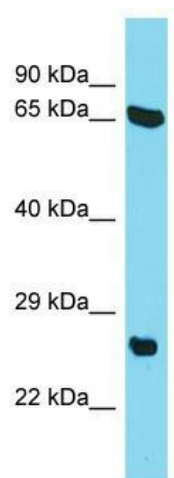
### C22orf23 Rabbit Polyclonal Antibody

#### Product data:

Product Type:	Primary Antibodies
Applications:	WB
Recommended Dilution:	WB
Reactivity:	Human
Host:	Rabbit
Isotype:	IgG
Clonality:	Polyclonal
Immunogen:	The immunogen for Anti-C22orf23 Antibody is: synthetic peptide directed towards the middle region of Human C22orf23. Synthetic peptide located within the following region: ILAARPHLRPANMCCQANGAYSREQFKPQATRDLEKEKQRLQNIFATGKDM
Formulation:	Liquid. Purified antibody supplied in 1x PBS buffer with 0.09% (w/v) sodium azide and 2% sucrose. <i>Note that this product is shipped as lyophilized powder to China customers.</i>
Purification:	Affinity Purified
Conjugation:	Unconjugated
Storage:	Store at -20°C as received.
Stability:	Stable for 12 months from date of receipt.
Predicted Protein Size:	24 kDa
Gene Name:	chromosome 22 open reading frame 23
Database Link:	<a href="#">NP_115950</a> <a href="#">Entrez Gene 84645 Human</a> <a href="#">Q9BZE7</a>
Background:	The function of this protein remains unknown.
Synonyms:	dj1039K5.6; EVG1
Note:	Immunogen sequence homology: Pig: 100%; Human: 100%; Guinea pig: 100%; Rat: 93%; Mouse: 93%; Dog: 86%; Horse: 86%; Bovine: 86%; Rabbit: 86%



[View online »](#)

**Product images:**

Host: Rabbit; Target Name: C22orf23; Sample  
Tissue: HepG2 Whole Cell lysates; Antibody  
Dilution: 1.0 ug/ml.