

Product datasheet for **TA333609**

PLA2G12B Rabbit Polyclonal Antibody

Product data:

Product Type:	Primary Antibodies
Applications:	WB
Recommended Dilution:	WB
Reactivity:	Human
Host:	Rabbit
Isotype:	IgG
Clonality:	Polyclonal
Immunogen:	The immunogen for Anti-PLA2G12B Antibody is: synthetic peptide directed towards the N-terminal region of Human PLA2G12B. Synthetic peptide located within the following region: LVLWLSLGGGLAQSDTSPDTEESYSDWGLRHLRGSFESVNSYFDSFLELL
Formulation:	Liquid. Purified antibody supplied in 1x PBS buffer with 0.09% (w/v) sodium azide and 2% sucrose. <i>Note that this product is shipped as lyophilized powder to China customers.</i>
Purification:	Affinity Purified
Conjugation:	Unconjugated
Storage:	Store at -20°C as received.
Stability:	Stable for 12 months from date of receipt.
Predicted Protein Size:	19 kDa
Gene Name:	phospholipase A2 group XIIB
Database Link:	NP_115951 Entrez Gene 84647 Human Q9BX93
Background:	Phospholipase A2 (PLA2) enzymes catalyze hydrolysis of glycolipids to release free fatty acids and lysophospholipids. PLA2G12B belongs to the PLA2 family, but it is catalytically inactive due to an amino acid change in its active site and has altered phospholipid-binding properties.
Synonyms:	FKSG71; GXIIB; GXIIIsPLA2; PLA2G13; sPLA2-GXIIB



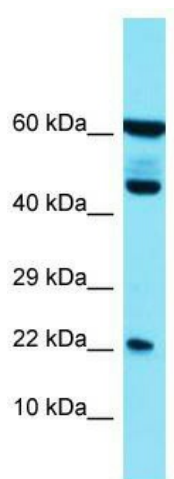
[View online »](#)

Note: Immunogen sequence homology: Human: 100%; Dog: 93%; Horse: 93%; Bovine: 93%; Pig: 79%; Rat: 79%; Mouse: 79%

Protein Families: Secreted Protein

Protein Pathways: alpha-Linolenic acid metabolism, Arachidonic acid metabolism, Ether lipid metabolism, Fc epsilon RI signaling pathway, Glycerophospholipid metabolism, GnRH signaling pathway, Linoleic acid metabolism, Long-term depression, MAPK signaling pathway, Metabolic pathways, Vascular smooth muscle contraction, VEGF signaling pathway

Product images:



Host: Rabbit; Target Name: PLA2G12B; Sample Tissue: HT1080 Whole Cell lysates; Antibody Dilution: 1.0 ug/ml.