

## Product datasheet for **TA333607**

### SMRP1 (C9orf24) Rabbit Polyclonal Antibody

#### Product data:

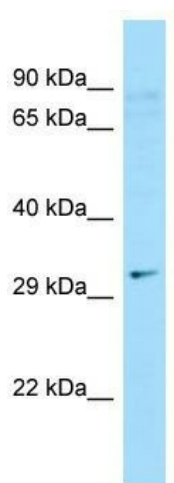
Product Type:	Primary Antibodies
Applications:	WB
Recommended Dilution:	WB
Reactivity:	Human
Host:	Rabbit
Isotype:	IgG
Clonality:	Polyclonal
Immunogen:	The immunogen for Anti-C9orf24 Antibody is: synthetic peptide directed towards the N-terminal region of Human C9orf24. Synthetic peptide located within the following region: MFLFSRKTRTPISTYSYRAPSISKEVYKDPPLCAWEANKFLTPGLTHT
Formulation:	Liquid. Purified antibody supplied in 1x PBS buffer with 0.09% (w/v) sodium azide and 2% sucrose. <i>Note that this product is shipped as lyophilized powder to China customers.</i>
Purification:	Affinity Purified
Conjugation:	Unconjugated
Storage:	Store at -20°C as received.
Stability:	Stable for 12 months from date of receipt.
Predicted Protein Size:	29 kDa
Gene Name:	chromosome 9 open reading frame 24
Database Link:	<a href="#">NP_115985</a> <a href="#">Entrez Gene 84688 Human</a> <a href="#">Q8NCR6</a>
Background:	This gene encodes a nuclear- or perinuclear-localized protein with no predicted domains or similarity to other known proteins. Expression of this gene is induced during the differentiation of bronchial epithelial cells, and the encoded protein may play a role in ciliogenesis. Alternatively spliced transcript variants encoding multiple isoforms have been observed for this gene.
Synonyms:	bA573M23.4; CBE1; NYD-SP22; SMRP1



[View online »](#)

**Note:** Immunogen sequence homology: Human: 100%; Pig: 93%; Rat: 93%; Horse: 93%; Mouse: 93%; Bovine: 93%; Dog: 86%; Rabbit: 86%; Guinea pig: 86%

### Product images:



WB Suggested Anti-C9orf24 Antibody; Titration: 1.0 ug/ml; Positive Control: Hela Whole cell