

Product datasheet for **TA333606**

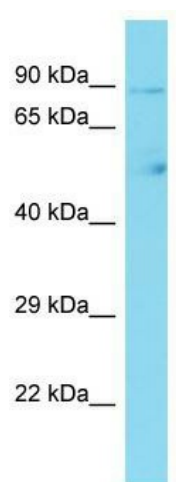
CCDC142 Rabbit Polyclonal Antibody

Product data:

Product Type:	Primary Antibodies
Applications:	WB
Recommended Dilution:	WB
Reactivity:	Human
Host:	Rabbit
Isotype:	IgG
Clonality:	Polyclonal
Immunogen:	The immunogen for Anti-CCDC142 Antibody is: synthetic peptide directed towards the C-terminal region of Human CCDC142. Synthetic peptide located within the following region: CCACQEVQTTKLPSSCLNSLESLEPPLQPGTSPAQTGQLQSTLGGRGPS
Formulation:	Liquid. Purified antibody supplied in 1x PBS buffer with 0.09% (w/v) sodium azide and 2% sucrose. <i>Note that this product is shipped as lyophilized powder to China customers.</i>
Purification:	Affinity Purified
Conjugation:	Unconjugated
Storage:	Store at -20°C as received.
Stability:	Stable for 12 months from date of receipt.
Predicted Protein Size:	80 kDa
Gene Name:	coiled-coil domain containing 142
Database Link:	NP_116168 Entrez Gene 84865 Human Q17RM4
Background:	The function of this protein remains unknown.
Synonyms:	FLJ14397; FLJ90728
Note:	Immunogen sequence homology: Human: 100%



[View online »](#)

Product images:

Host: Rabbit; Target Name: CCDC142; Sample Tissue: HeLa Whole cell lysates; Antibody Dilution: 1.0 ug/ml.