

Product datasheet for TA333605

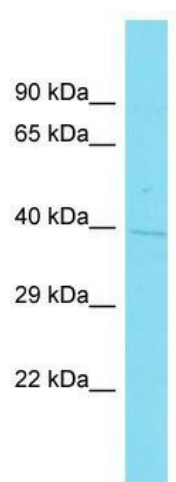
C1orf198 Rabbit Polyclonal Antibody

Product data:

Product Type:	Primary Antibodies
Applications:	WB
Recommended Dilution:	WB
Reactivity:	Human
Host:	Rabbit
Isotype:	IgG
Clonality:	Polyclonal
Immunogen:	The immunogen for Anti-C1orf198 Antibody is: synthetic peptide directed towards the C-terminal region of Human C1orf198. Synthetic peptide located within the following region: LPPCYRQEPAPKDREAKVERPSTLRQEQRPLPNVSTERERPQPVQAFSSA
Formulation:	Liquid. Purified antibody supplied in 1x PBS buffer with 0.09% (w/v) sodium azide and 2% sucrose.
Purification:	Affinity Purified
Conjugation:	Unconjugated
Storage:	Store at -20°C as received.
Stability:	Stable for 12 months from date of receipt.
Predicted Protein Size:	36 kDa
Gene Name:	chromosome 1 open reading frame 198
Database Link:	NP_116189 Entrez Gene 84886 Human Q9H425
Background:	The function of this protein remains unknown.
Synonyms:	DKFZp667D152; FLJ14525; FLJ16283; FLJ38847; MGC10710
Note:	Immunogen sequence homology: Human: 100%; Rat: 91%; Dog: 79%; Rabbit: 79%; Bovine: 77%


[View online »](#)

Product images:



Host: Rabbit; Target Name: C1orf198; Sample
Tissue: NCI-H226 Whole Cell lysates; Antibody
Dilution: 1.0 ug/ml.