

Product datasheet for **TA333604**

SLC7A3 Rabbit Polyclonal Antibody

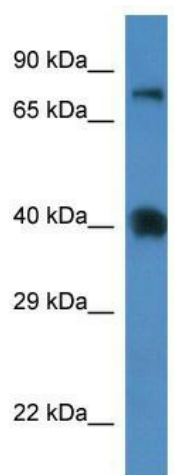
Product data:

Product Type:	Primary Antibodies
Applications:	WB
Recommended Dilution:	WB
Reactivity:	Mouse
Host:	Rabbit
Isotype:	IgG
Clonality:	Polyclonal
Immunogen:	The immunogen for Anti-Slc7a3 Antibody: synthetic peptide corresponding to a region of Mouse. Synthetic peptide located within the following region: RAWSSAFDNLIGNHISRTLKGTILLKMPHVLAEYPDFALALVLLLTGLL
Formulation:	Liquid. Purified antibody supplied in 1x PBS buffer with 0.09% (w/v) sodium azide and 2% sucrose.
Purification:	Affinity Purified
Conjugation:	Unconjugated
Storage:	Store at -20°C as received.
Stability:	Stable for 12 months from date of receipt.
Predicted Protein Size:	67 kDa
Gene Name:	solute carrier family 7 member 3
Database Link:	NP_116192 Entrez Gene 11989 Mouse Q8WY07
Background:	Slc7a3 mediates the uptake of the cationic amino acids arginine, lysine and ornithine in a sodium-independent manner.
Synonyms:	ATRC3; CAT-3; CAT3
Note:	Immunogen sequence homology: Dog: 100%; Pig: 100%; Rat: 100%; Horse: 100%; Human: 100%; Mouse: 100%; Bovine: 100%; Rabbit: 100%; Guinea pig: 100%
Protein Families:	Druggable Genome, Transmembrane



[View online »](#)

Product images:



WB Suggested Anti-Slc7a3 Antibody; Titration: 1.0 ug/ml; Positive Control: Mouse Spleen