

Product datasheet for **TA333602**

CEP89 Rabbit Polyclonal Antibody

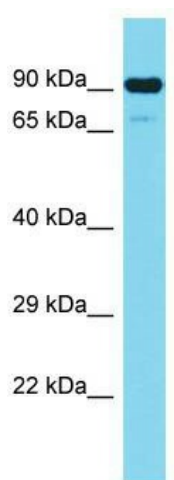
Product data:

Product Type:	Primary Antibodies
Applications:	WB
Recommended Dilution:	WB
Reactivity:	Human
Host:	Rabbit
Isotype:	IgG
Clonality:	Polyclonal
Immunogen:	The immunogen for Anti-CEP89 Antibody is: synthetic peptide directed towards the N-terminal region of Human CEP89. Synthetic peptide located within the following region: PNPSPERPRSAIAAILATTLTGRTVAIPQPRQRSSESDVSSVEQDSFI
Formulation:	Liquid. Purified antibody supplied in 1x PBS buffer with 0.09% (w/v) sodium azide and 2% sucrose. <i>Note that this product is shipped as lyophilized powder to China customers.</i>
Purification:	Affinity Purified
Conjugation:	Unconjugated
Storage:	Store at -20°C as received.
Stability:	Stable for 12 months from date of receipt.
Predicted Protein Size:	89 kDa
Gene Name:	centrosomal protein 89
Database Link:	NP_116205 Entrez Gene 84902 Human Q96ST8
Background:	The function of this protein remains unknown.
Synonyms:	CCDC123; CEP123
Note:	Immunogen sequence homology: Human: 100%; Rat: 92%; Mouse: 92%; Horse: 91%; Pig: 85%; Guinea pig: 85%



[View online »](#)

Product images:



Host: Rabbit; Target Name: CEP89; Sample
Tissue: Jurkat Whole Cell lysates; Antibody
Dilution: 1.0 ug/ml.