

Product datasheet for **TA333601**

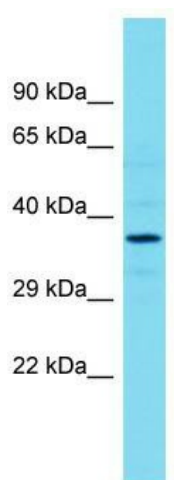
ARHGEF39 Rabbit Polyclonal Antibody

Product data:

| | |
|-------------------------|---|
| Product Type: | Primary Antibodies |
| Applications: | WB |
| Recommended Dilution: | WB |
| Reactivity: | Human |
| Host: | Rabbit |
| Isotype: | IgG |
| Clonality: | Polyclonal |
| Immunogen: | The immunogen for Anti-ARHGEF39 Antibody is: synthetic peptide directed towards the N-terminal region of Human ARHGEF39. Synthetic peptide located within the following region: QEQRARWERKRACTARELLETERRYQEQGLVATYFLGILKAKGTLRPPE |
| Formulation: | Liquid. Purified antibody supplied in 1x PBS buffer with 0.09% (w/v) sodium azide and 2% sucrose. <i>Note that this product is shipped as lyophilized powder to China customers.</i> |
| Purification: | Affinity Purified |
| Conjugation: | Unconjugated |
| Storage: | Store at -20°C as received. |
| Stability: | Stable for 12 months from date of receipt. |
| Predicted Protein Size: | 38 kDa |
| Gene Name: | Rho guanine nucleotide exchange factor 39 |
| Database Link: | NP_116207 Entrez Gene 84904 Human Q8N4T4 |
| Background: | ARHGEF39 is a Guanine nucleotide exchange factor. |
| Synonyms: | C9orf100 |
| Note: | Immunogen sequence homology: Pig: 100%; Rat: 100%; Horse: 100%; Human: 100%; Mouse: 100%; Bovine: 100%; Dog: 93%; Rabbit: 93%; Guinea pig: 86% |



[View online »](#)

Product images:

Host: Rabbit; Target Name: ARHGEF39; Sample Tissue: RPMI-8226 Whole Cell lysates; Antibody Dilution: 1.0 ug/ml.