

## Product datasheet for **TA333600**

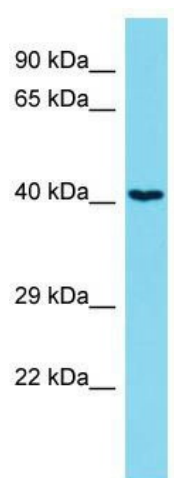
### ARHGEF39 Rabbit Polyclonal Antibody

#### Product data:

Product Type:	Primary Antibodies
Applications:	WB
Recommended Dilution:	WB
Reactivity:	Human
Host:	Rabbit
Isotype:	IgG
Clonality:	Polyclonal
Immunogen:	The immunogen for Anti-ARHGEF39 Antibody is: synthetic peptide directed towards the C-terminal region of Human ARHGEF39. Synthetic peptide located within the following region: PNSPDHQQLTRAARLISETAQRVHTIGQKQKNDQHLRRVQALLSGRQAKG
Formulation:	Liquid. Purified antibody supplied in 1x PBS buffer with 0.09% (w/v) sodium azide and 2% sucrose. <i>Note that this product is shipped as lyophilized powder to China customers.</i>
Purification:	Affinity Purified
Conjugation:	Unconjugated
Storage:	Store at -20°C as received.
Stability:	Stable for 12 months from date of receipt.
Predicted Protein Size:	38 kDa
Gene Name:	Rho guanine nucleotide exchange factor 39
Database Link:	<a href="#">NP_116207</a> <a href="#">Entrez Gene 84904 Human Q8N4T4</a>
Background:	ARHGEF39 is a Guanine nucleotide exchange factor.
Synonyms:	C9orf100
Note:	Immunogen sequence homology: Pig: 100%; Horse: 100%; Human: 100%; Rat: 93%; Guinea pig: 93%; Bovine: 92%; Rabbit: 86%; Mouse: 85%; Dog: 79%



[View online »](#)

**Product images:**

Host: Rabbit; Target Name: ARHGEF39; Sample  
Tissue: Jurkat Whole Cell lysates; Antibody  
Dilution: 1.0 ug/ml.