

## Product datasheet for **TA333598**

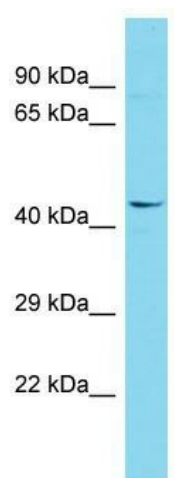
### C12orf34 (FAM222A) Rabbit Polyclonal Antibody

#### Product data:

Product Type:	Primary Antibodies
Applications:	WB
Recommended Dilution:	WB
Reactivity:	Human
Host:	Rabbit
Isotype:	IgG
Clonality:	Polyclonal
Immunogen:	The immunogen for Anti-FAM222A Antibody is: synthetic peptide directed towards the N-terminal region of Human FAM222A. Synthetic peptide located within the following region: PQHTAGYQGLLAIVKAAVSSSSTAAPAGPAKSVLKSAEGKRTKLSPAAVQ
Formulation:	Liquid. Purified antibody supplied in 1x PBS buffer with 0.09% (w/v) sodium azide and 2% sucrose. <i>Note that this product is shipped as lyophilized powder to China customers.</i>
Purification:	Affinity Purified
Conjugation:	Unconjugated
Storage:	Store at -20°C as received.
Stability:	Stable for 12 months from date of receipt.
Predicted Protein Size:	46 kDa
Gene Name:	family with sequence similarity 222 member A
Database Link:	<a href="#">NP_116218</a> <a href="#">Entrez Gene 84915 Human</a> <a href="#">Q5U5X8</a>
Background:	The function of this protein remains unknown.
Synonyms:	C12orf34
Note:	Immunogen sequence homology: Dog: 100%; Pig: 100%; Rat: 100%; Human: 100%; Bovine: 100%; Rabbit: 100%; Guinea pig: 100%; Mouse: 93%; Zebrafish: 77%



[View online »](#)

**Product images:**

Host: Rabbit; Target Name: FAM222A; Sample  
Tissue: 293T Whole Cell lysates; Antibody  
Dilution: 1.0 ug/ml.