

Product datasheet for TA333596

C8orf76 Rabbit Polyclonal Antibody

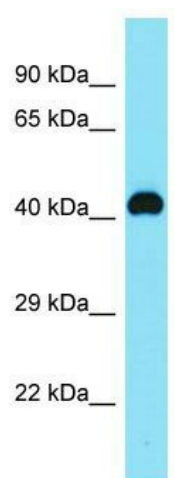
Product data:

Product Type:	Primary Antibodies
Applications:	WB
Recommended Dilution:	WB
Reactivity:	Human
Host:	Rabbit
Isotype:	IgG
Clonality:	Polyclonal
Immunogen:	The immunogen for Anti-C8orf76 Antibody is: synthetic peptide directed towards the N-terminal region of Human C8orf76. Synthetic peptide located within the following region: GDLAYRRQEYQKALQEYSSISEKLSSTNFAMKRDVQEGQARCLAHLGRHM
Formulation:	Liquid. Purified antibody supplied in 1x PBS buffer with 0.09% (w/v) sodium azide and 2% sucrose. <i>Note that this product is shipped as lyophilized powder to China customers.</i>
Purification:	Affinity Purified
Conjugation:	Unconjugated
Storage:	Store at -20°C as received.
Stability:	Stable for 12 months from date of receipt.
Predicted Protein Size:	43 kDa
Gene Name:	chromosome 8 open reading frame 76
Database Link:	NP_116236 Entrez Gene 84933 Human Q96K31
Background:	The function of this protein remains unknown.
Synonyms:	FLJ14825; MGC9784
Note:	Immunogen sequence homology: Dog: 100%; Pig: 100%; Rat: 100%; Human: 100%; Mouse: 100%; Bovine: 100%; Rabbit: 93%; Horse: 92%; Guinea pig: 86%



[View online »](#)

Product images:



Host: Rabbit; Target Name: C8orf76; Sample
Tissue: MDA-MB-435S Whole Cell lysates;
Antibody Dilution: 1.0 ug/ml.