

Product datasheet for TA333595

C13orf33 (MEDAG) Rabbit Polyclonal Antibody

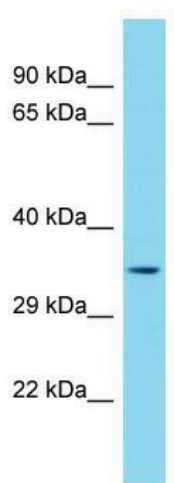
Product data:

Product Type:	Primary Antibodies
Applications:	WB
Recommended Dilution:	WB
Reactivity:	Human
Host:	Rabbit
Isotype:	IgG
Clonality:	Polyclonal
Immunogen:	The immunogen for Anti-MEDAG Antibody is: synthetic peptide directed towards the middle region of Human MEDAG. Synthetic peptide located within the following region: MLFFINVQTKKDTSKERTYAFLVNTRHPKIRRQIEQGMMDMVISSVIGESY
Formulation:	Liquid. Purified antibody supplied in 1x PBS buffer with 0.09% (w/v) sodium azide and 2% sucrose.
Purification:	Affinity Purified
Conjugation:	Unconjugated
Storage:	Store at -20°C as received.
Stability:	Stable for 12 months from date of receipt.
Predicted Protein Size:	33 kDa
Gene Name:	mesenteric estrogen dependent adipogenesis
Database Link:	NP_116238 Entrez Gene 84935 Human Q5VYS4
Background:	The function of this protein remains unknown.
Synonyms:	AWMS3; C13orf33; hAWMS3; MEDA-4; MEDA4



Note: Immunogen sequence homology: Human: 100%; Dog: 93%; Pig: 93%; Rat: 93%; Horse: 93%;
Mouse: 93%; Rabbit: 93%; Bovine: 85%

Product images:



Host: Rabbit; Target Name: MEDAG; Sample
Tissue: HepG2 Whole Cell lysates; Antibody
Dilution: 1.0 ug/ml.