

Product datasheet for **TA333594**

C18orf45 (TMEM241) Rabbit Polyclonal Antibody

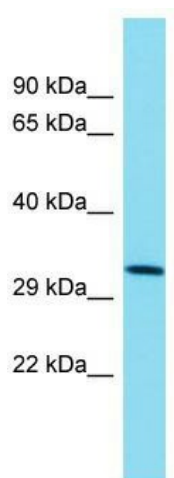
Product data:

Product Type:	Primary Antibodies
Applications:	WB
Recommended Dilution:	WB
Reactivity:	Human
Host:	Rabbit
Isotype:	IgG
Clonality:	Polyclonal
Immunogen:	The immunogen for Anti-TMEM241 Antibody is: synthetic peptide directed towards the C-terminal region of Human TMEM241. Synthetic peptide located within the following region: YFWAIHLLCVGAYKILQKSQKPSALSDIDQQYLNIFSVLLAFASHPT
Formulation:	Liquid. Purified antibody supplied in 1x PBS buffer with 0.09% (w/v) sodium azide and 2% sucrose.
Purification:	Affinity Purified
Conjugation:	Unconjugated
Storage:	Store at -20°C as received.
Stability:	Stable for 12 months from date of receipt.
Predicted Protein Size:	32 kDa
Gene Name:	transmembrane protein 241
Database Link:	NP_116322 Entrez Gene 85019 Human Q24IQ0
Background:	The function of this protein remains unknown.
Synonyms:	C18orf45; hVVT
Note:	Immunogen sequence homology: Human: 100%; Bovine: 100%; Dog: 79%
Protein Families:	Transmembrane



[View online »](#)

Product images:



Host: Rabbit; Target Name: TMEM241; Sample Tissue: NCI-H226 Whole Cell lysates; Antibody Dilution: 1.0 ug/ml.