

Product datasheet for **TA333593**

KRT84 Rabbit Polyclonal Antibody

Product data:

Product Type:	Primary Antibodies
Applications:	WB
Recommended Dilution:	WB
Reactivity:	Human
Host:	Rabbit
Isotype:	IgG
Clonality:	Polyclonal
Immunogen:	The immunogen for Anti-KRT84 Antibody: synthetic peptide directed towards the middle region of human KRT84. Synthetic peptide located within the following region: ESYITNLRRQLEVLVSDQARLQAERNHLQDVLEGFKKKYEEEVCRANAE
Formulation:	Liquid. Purified antibody supplied in 1x PBS buffer with 0.09% (w/v) sodium azide and 2% sucrose. <i>Note that this product is shipped as lyophilized powder to China customers.</i>
Purification:	Affinity Purified
Conjugation:	Unconjugated
Storage:	Store at -20°C as received.
Stability:	Stable for 12 months from date of receipt.
Predicted Protein Size:	65 kDa
Gene Name:	keratin 84
Database Link:	NP_149034 Entrez Gene 3890 Human Q9NSB2



[View online »](#)

Background:

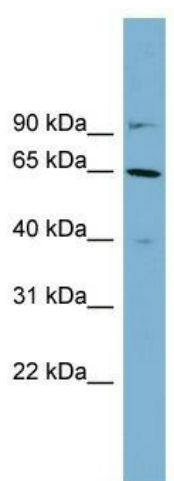
The protein encoded by this gene is a member of the keratin gene family. As a type II hair keratin, it is a basic protein which heterodimerizes with type I keratins to form hair and nails. The type II hair keratins are clustered in a region of chromosome 12q13 and are grouped into two distinct subfamilies based on structure similarity. One subfamily, consisting of KRTHB1, KRTHB3, and KRTHB6, is highly related. The other less-related subfamily includes KRTHB2, KRTHB4, and KRTHB5. All hair keratins are expressed in the hair follicle; this hair keratin is contained primarily in the filiform tongue papilla, among other hair keratins. [provided by RefSeq, Jul 2008]

Synonyms:

HB4; KRTHB4

Note:

Immunogen sequence homology: Human: 100%; Mouse: 100%; Rat: 93%; Rabbit: 93%; Bovine: 86%; Horse: 79%

Product images:

WB Suggested Anti-KRT84 Antibody Titration: 0.2-1 ug/ml; Positive Control: THP-1 cell lysate