

## Product datasheet for **TA333592**

### Prostein (SLC45A3) Rabbit Polyclonal Antibody

#### Product data:

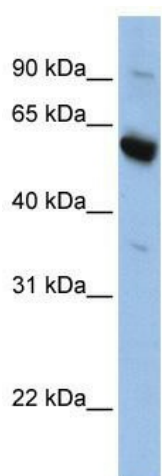
Product Type:	Primary Antibodies
Applications:	WB
Recommended Dilution:	WB
Reactivity:	Human
Host:	Rabbit
Isotype:	IgG
Clonality:	Polyclonal
Immunogen:	The immunogen for Anti-SLC45A3 Antibody: synthetic peptide directed towards the middle region of human SLC45A3. Synthetic peptide located within the following region: LFYTDFVGEGLYQGVPRAEPGTEARRHYDEGVRMGSLGLFLQCAISLVFS
Formulation:	Liquid. Purified antibody supplied in 1x PBS buffer with 0.09% (w/v) sodium azide and 2% sucrose.
Purification:	Affinity Purified
Conjugation:	Unconjugated
Storage:	Store at -20°C as received.
Stability:	Stable for 12 months from date of receipt.
Predicted Protein Size:	59 kDa
Gene Name:	solute carrier family 45 member 3
Database Link:	<a href="#">NP_149093</a> <a href="#">Entrez Gene 85414 Human</a> <a href="#">Q96JT2</a>
Background:	SLC45A3 is a multi-pass membrane protein. It belongs to the glycoside-pentoside-hexuronide (GPH) cation symporter transporter (TC 2.A.2) family. It is a marker for prostate cells. It may be used, in case of prostate cancers, as a target antigen for prostate carcinomas-directed cytotoxic T-cell lymphocytes.
Synonyms:	IPCA-2; IPCA-6; IPCA-8; IPCA6; PCANAP2; PCANAP6; PCANAP8; PRST
Note:	Immunogen sequence homology: Dog: 100%; Pig: 100%; Rat: 100%; Horse: 100%; Human: 100%; Mouse: 100%; Rabbit: 100%; Guinea pig: 100%; Bovine: 93%



[View online »](#)

Protein Families: Transmembrane

### Product images:



WB Suggested Anti-SLC45A3 Antibody Titration:  
0.2-1 ug/ml; Positive Control: HepG2 cell lysate