

Product datasheet for **TA333590**

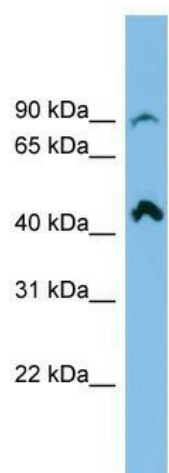
N4BP2L2 Rabbit Polyclonal Antibody

Product data:

Product Type:	Primary Antibodies
Applications:	WB
Recommended Dilution:	WB
Reactivity:	Human
Host:	Rabbit
Isotype:	IgG
Clonality:	Polyclonal
Immunogen:	The immunogen for Anti-N4BP2L2 Antibody: synthetic peptide directed towards the N terminal of human N4BP2L2. Synthetic peptide located within the following region: EYQMSISIVMNSVEPSHKSTQRPPPPQGRQRRVLLKKTGHRLSKTKQKRN
Formulation:	Liquid. Purified antibody supplied in 1x PBS buffer with 0.09% (w/v) sodium azide and 2% sucrose. <i>Note that this product is shipped as lyophilized powder to China customers.</i>
Purification:	Affinity Purified
Conjugation:	Unconjugated
Storage:	Store at -20°C as received.
Stability:	Stable for 12 months from date of receipt.
Predicted Protein Size:	87 kDa
Gene Name:	NEDD4 binding protein 2-like 2
Database Link:	NP_149102 Entrez Gene 10443 Human Q92802
Background:	The function of this protein remains unknown.
Synonyms:	92M18.3; CG005; CG016; PFAAP5
Note:	Immunogen sequence homology: Dog: 100%; Pig: 100%; Human: 100%; Horse: 79%



[View online »](#)

Product images:

WB Suggested Anti-RP11-298P3.3 Antibody
Titration: 0.2-1 ug/ml; ELISA Titer: 1: 62500;
Positive Control: THP-1 cell lysate