

## Product datasheet for **TA333589**

### SLC22A16 Rabbit Polyclonal Antibody

#### Product data:

Product Type:	Primary Antibodies
Applications:	IHC, WB
Recommended Dilution:	WB, IHC
Reactivity:	Human
Host:	Rabbit
Isotype:	IgG
Clonality:	Polyclonal
Immunogen:	The immunogen for Anti-SLC22A16 Antibody: synthetic peptide directed towards the N terminal of human SLC22A16. Synthetic peptide located within the following region: CSRNKRENTSSSLGYEYTGSKKEFPCVDGYIYDQNTWKSTAVTQWNLVCDR
Formulation:	Liquid. Purified antibody supplied in 1x PBS buffer with 0.09% (w/v) sodium azide and 2% sucrose.
Purification:	Affinity Purified
Conjugation:	Unconjugated
Storage:	Store at -20°C as received.
Stability:	Stable for 12 months from date of receipt.
Predicted Protein Size:	63 kDa
Gene Name:	solute carrier family 22 member 16
Database Link:	<a href="#">NP_149116</a> <a href="#">Entrez Gene 85413 Human</a> <a href="#">Q86VW1</a>
Background:	Organic ion transporters, such as SLC22A16, transport various medically and physiologically important compounds, including pharmaceuticals, toxins, hormones, neurotransmitters, and cellular metabolites. These transporters are also referred to as amphiphilic solute facilitators (ASFs). Organic ion transporters, such as SLC22A16, transport various medically and physiologically important compounds, including pharmaceuticals, toxins, hormones, neurotransmitters, and cellular metabolites. These transporters are also referred to as amphiphilic solute facilitators (ASFs). [supplied by OMIM]



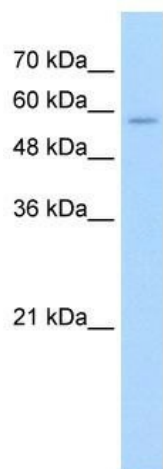
[View online »](#)

**Synonyms:** CT2; dj261K5.1; FLIPT2; OAT6; OCT6; OKB1

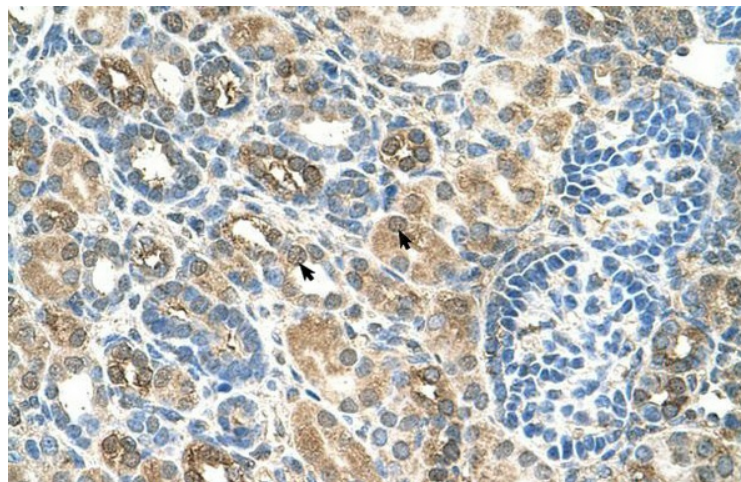
**Note:** Immunogen sequence homology: Human: 100%

**Protein Families:** Transmembrane

**Product images:**



WB Suggested Anti-SLC22A16 Antibody Titration:  
2.5 ug/ml; Positive Control: HepG2 cell lysate



Human kidney