

## Product datasheet for **TA333588**

### ABCC11 Rabbit Polyclonal Antibody

#### Product data:

Product Type:	Primary Antibodies
Applications:	WB
Recommended Dilution:	WB
Reactivity:	Human
Host:	Rabbit
Isotype:	IgG
Clonality:	Polyclonal
Immunogen:	The immunogen for Anti-ABCC11 Antibody: synthetic peptide directed towards the middle region of human ABCC11. Synthetic peptide located within the following region: NSKIILIDEATASIDMETDTLIQRTIREAFQGCTVLVIAHRVTTVLNCDH
Formulation:	Liquid. Purified antibody supplied in 1x PBS buffer with 0.09% (w/v) sodium azide and 2% sucrose. <i>Note that this product is shipped as lyophilized powder to China customers.</i>
Purification:	Affinity Purified
Conjugation:	Unconjugated
Storage:	Store at -20°C as received.
Stability:	Stable for 12 months from date of receipt.
Predicted Protein Size:	154 kDa
Gene Name:	ATP binding cassette subfamily C member 11
Database Link:	<a href="#">NP_149163</a> <a href="#">Entrez Gene 85320 Human</a> <a href="#">Q96J66</a>



[View online »](#)

**Background:** The protein encoded by this gene is a member of the superfamily of ATP-binding cassette (ABC) transporters. ABC proteins transport various molecules across extra- and intra-cellular membranes. ABC genes are divided into seven distinct subfamilies (ABC1, MDR/TAP, MRP, ALD, OABP, GCN20, White). This ABC full transporter is a member of the MRP subfamily which is involved in multi-drug resistance. The product of this gene participates in physiological processes involving bile acids, conjugated steroids, and cyclic nucleotides. In addition, a SNP in this gene is responsible for determination of human earwax type. This gene and family member ABCC12 are determined to be derived by duplication and are both localized to chromosome 16q12.1. Multiple alternatively spliced transcript variants have been described for this gene. [provided by RefSeq, Jul 2008]

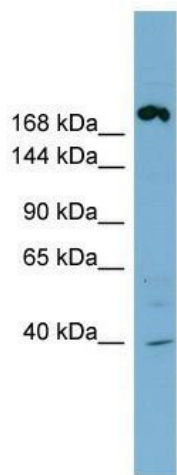
**Synonyms:** EWWD; MRP8; WW

**Note:** Immunogen sequence homology: Human: 100%; Horse: 93%; Dog: 86%; Pig: 86%; Rat: 86%; Mouse: 86%; Yeast: 86%; Bovine: 86%; Rabbit: 86%; Guinea pig: 86%

**Protein Families:** Druggable Genome, Transmembrane

**Protein Pathways:** ABC transporters

### Product images:



WB Suggested Anti-ABCC11 Antibody Titration:  
0.2-1 ug/ml; Positive Control: NCI-H226 cell lysate