

Product datasheet for **TA333587**

SLC8A3 Rabbit Polyclonal Antibody

Product data:

Product Type:	Primary Antibodies
Applications:	WB
Recommended Dilution:	WB
Reactivity:	Human
Host:	Rabbit
Isotype:	IgG
Clonality:	Polyclonal
Immunogen:	The immunogen for Anti-SLC8A3 Antibody: synthetic peptide directed towards the N terminal of human SLC8A3. Synthetic peptide located within the following region: SAPEILLSLIEVCGHGFIAAGDLGPSTIVGSAAFNMFIIIGICVYVIPDGE
Formulation:	Liquid. Purified antibody supplied in 1x PBS buffer with 0.09% (w/v) sodium azide and 2% sucrose. <i>Note that this product is shipped as lyophilized powder to China customers.</i>
Purification:	Affinity Purified
Conjugation:	Unconjugated
Storage:	Store at -20°C as received.
Stability:	Stable for 12 months from date of receipt.
Predicted Protein Size:	103 kDa
Gene Name:	solute carrier family 8 member A3
Database Link:	NP_150287 Entrez Gene 6547 Human P57103



[View online »](#)

Background:

SLC8A3 is a member of the sodium/calcium exchanger integral membrane protein family. Three mammalian isoforms in family 8 have been identified. Na⁺/Ca²⁺ exchange proteins are involved in maintaining Ca²⁺ homeostasis in a wide variety of cell types. The protein is regulated by intracellular calcium ions and is found in both the plasma membrane and intracellular organellar membranes, where exchange of Na⁺ for Ca²⁺ occurs in an electrogenic manner. This gene encodes a member of the sodium/calcium exchanger integral membrane protein family. Three mammalian isoforms in family 8 have been identified. Na⁺/Ca²⁺ exchange proteins are involved in maintaining Ca²⁺ homeostasis in a wide variety of cell types. The protein is regulated by intracellular calcium ions and is found in both the plasma membrane and intracellular organellar membranes, where exchange of Na⁺ for Ca²⁺ occurs in an electrogenic manner. Alternative splicing has been observed for this gene and multiple variants have been described.

Synonyms:

NCX3

Note:

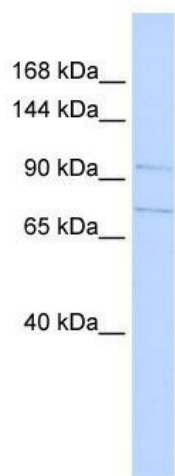
Immunogen sequence homology: Dog: 100%; Pig: 100%; Rat: 100%; Horse: 100%; Human: 100%; Mouse: 100%; Bovine: 100%; Rabbit: 100%; Guinea pig: 100%

Protein Families:

Transmembrane

Protein Pathways:

Calcium signaling pathway

Product images:

WB Suggested Anti-SLC8A3 Antibody Titration:
0.2-1 ug/ml; ELISA Titer: 1:1562500; Positive
Control: 721_B cell lysate