

Product datasheet for **TA333586**

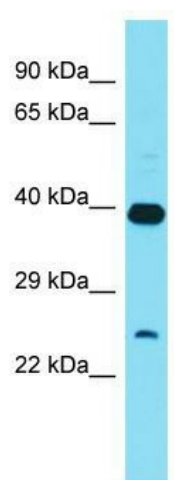
XRCC6BP1 (ATP23) Rabbit Polyclonal Antibody

Product data:

Product Type:	Primary Antibodies
Applications:	WB
Recommended Dilution:	WB
Reactivity:	Human
Host:	Rabbit
Isotype:	IgG
Clonality:	Polyclonal
Immunogen:	The immunogen for Anti-XRCC6BP1 Antibody is: synthetic peptide directed towards the C-terminal region of Human XRCC6BP1. Synthetic peptide located within the following region: NISKEVAKKAVDEVFESCFNDHEPFGRIPHNKTYARYAHRDFENRDRIYS
Formulation:	Liquid. Purified antibody supplied in 1x PBS buffer with 0.09% (w/v) sodium azide and 2% sucrose. <i>Note that this product is shipped as lyophilized powder to China customers.</i>
Purification:	Affinity Purified
Conjugation:	Unconjugated
Storage:	Store at -20°C as received.
Stability:	Stable for 12 months from date of receipt.
Predicted Protein Size:	27 kDa
Gene Name:	ATP23 metallopeptidase and ATP synthase assembly factor homolog (S. cerevisiae)
Database Link:	NP_150592 Entrez Gene 91419 Human Q9Y6H3
Background:	The function of this protein remains unknown.
Synonyms:	KUB3; XRCC6BP1
Note:	Immunogen sequence homology: Human: 100%; Dog: 93%; Pig: 93%; Rat: 93%; Horse: 93%; Mouse: 93%; Bovine: 93%; Rabbit: 93%; Guinea pig: 93%; Zebrafish: 92%



[View online »](#)

Product images:

Host: Rabbit; Target Name: XRCC6BP1; Sample
Tissue: HT1080 Whole Cell lysates; Antibody
Dilution: 1.0 ug/ml.