

Product datasheet for **TA333585**

TRAF4AF1 (KNSTRN) Rabbit Polyclonal Antibody

Product data:

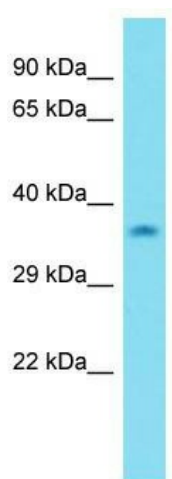
Product Type:	Primary Antibodies
Applications:	WB
Recommended Dilution:	WB
Reactivity:	Human
Host:	Rabbit
Isotype:	IgG
Clonality:	Polyclonal
Immunogen:	The immunogen for Anti-C15orf23 Antibody is: synthetic peptide directed towards the N-terminal region of Human C15orf23. Synthetic peptide located within the following region: YRKFLFETQAADLAGGTTVAAGNLLNESEKDCGQDRRAPGVQPCRLVTMT
Formulation:	Liquid. Purified antibody supplied in 1x PBS buffer with 0.09% (w/v) sodium azide and 2% sucrose. <i>Note that this product is shipped as lyophilized powder to China customers.</i>
Purification:	Affinity Purified
Conjugation:	Unconjugated
Storage:	Store at -20°C as received.
Stability:	Stable for 12 months from date of receipt.
Predicted Protein Size:	35 kDa
Gene Name:	kinetochore-localized astrin/SPAG5 binding protein
Database Link:	NP_150628 Entrez Gene 90417 Human Q9Y448
Background:	C15orf23 is an essential component of the mitotic spindle required for faithful chromosome segregation and progression into anaphase. It promotes the metaphase-to-anaphase transition and is required for chromosome alignment, normal timing of sister chromatid segregation, and maintenance of spindle pole architecture. The astrin (SPAG5)-kinastrin (SKAP) complex promotes stable microtubule-kinetochore attachments.
Synonyms:	C15orf23; HSD11; SKAP; TRAF4AF1



[View online »](#)

Note: Immunogen sequence homology: Human: 100%

Product images:



Host: Rabbit; Target Name: C15orf23; Sample
Tissue: MDA-MB-435S Whole Cell lysates;
Antibody Dilution: 1.0 ug/ml.