

## Product datasheet for **TA333584**

### **TRAF4AF1 (KNSTRN) Rabbit Polyclonal Antibody**

#### **Product data:**

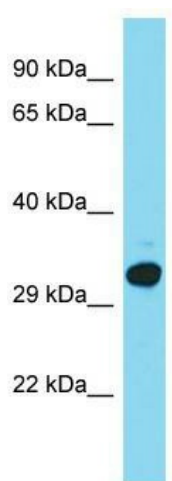
<b>Product Type:</b>	Primary Antibodies
<b>Applications:</b>	WB
<b>Recommended Dilution:</b>	WB
<b>Reactivity:</b>	Human
<b>Host:</b>	Rabbit
<b>Isotype:</b>	IgG
<b>Clonality:</b>	Polyclonal
<b>Immunogen:</b>	The immunogen for Anti-C15orf23 Antibody is: synthetic peptide directed towards the middle region of Human C15orf23. Synthetic peptide located within the following region: TDTATRRNVRKGYKPLSKQKSEELKDKNQLLEAVNKQLHQKLTETQGEL
<b>Formulation:</b>	Liquid. Purified antibody supplied in 1x PBS buffer with 0.09% (w/v) sodium azide and 2% sucrose. <i>Note that this product is shipped as lyophilized powder to China customers.</i>
<b>Purification:</b>	Affinity Purified
<b>Conjugation:</b>	Unconjugated
<b>Storage:</b>	Store at -20°C as received.
<b>Stability:</b>	Stable for 12 months from date of receipt.
<b>Predicted Protein Size:</b>	35 kDa
<b>Gene Name:</b>	kinetochore-localized astrin/SPAG5 binding protein
<b>Database Link:</b>	<a href="#">NP_150628</a> <a href="#">Entrez Gene 90417 Human</a> <a href="#">Q9Y448</a>
<b>Background:</b>	C15orf23 is an essential component of the mitotic spindle required for faithful chromosome segregation and progression into anaphase. It promotes the metaphase-to-anaphase transition and is required for chromosome alignment, normal timing of sister chromatid segregation, and maintenance of spindle pole architecture. The astrin (SPAG5)-kinastrin (SKAP) complex promotes stable microtubule-kinetochore attachments.
<b>Synonyms:</b>	C15orf23; HSD11; SKAP; TRAF4AF1



[View online »](#)

**Note:** Immunogen sequence homology: Dog: 100%; Pig: 100%; Horse: 100%; Human: 100%; Bovine: 100%; Rabbit: 100%; Guinea pig: 100%; Mouse: 85%; Yeast: 82%; Rat: 79%

### Product images:



Host: Rabbit; Target Name: C15orf23; Sample Tissue: HepG2 Whole Cell lysates; Antibody Dilution: 1.0 ug/ml.