

## Product datasheet for **TA333583**

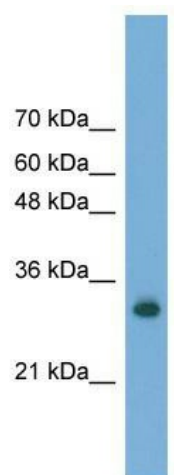
### FAM78A Rabbit Polyclonal Antibody

#### Product data:

Product Type:	Primary Antibodies
Applications:	WB
Recommended Dilution:	WB
Reactivity:	Human
Host:	Rabbit
Isotype:	IgG
Clonality:	Polyclonal
Immunogen:	The immunogen for Anti-FAM78A Antibody: synthetic peptide directed towards the C terminal of human FAM78A. Synthetic peptide located within the following region: WRMQLSIEVNPNRPLGQRARLREPIAQDQPKILSKNEPIPPSALVKPNAN
Formulation:	Liquid. Purified antibody supplied in 1x PBS buffer with 0.09% (w/v) sodium azide and 2% sucrose.
Purification:	Affinity Purified
Conjugation:	Unconjugated
Storage:	Store at -20°C as received.
Stability:	Stable for 12 months from date of receipt.
Predicted Protein Size:	32 kDa
Gene Name:	family with sequence similarity 78 member A
Database Link:	<a href="#">NP_203745</a> <a href="#">Entrez Gene 286336 Human</a> <a href="#">Q5JUQ0</a>
Background:	The exact functions of FAM78A remain unknown.
Synonyms:	C9orf59
Note:	Immunogen sequence homology: Dog: 100%; Rat: 100%; Human: 100%; Mouse: 100%; Pig: 93%; Horse: 93%; Bovine: 93%; Rabbit: 93%; Guinea pig: 86%; Zebrafish: 82%



[View online »](#)

**Product images:**

WB Suggested Anti-FAM78A Antibody Titration:  
0.2-1 ug/ml; ELISA Titer: 1: 312500; Positive  
Control: Transfected 293T