

Product datasheet for **TA333581**

ARMC6 Rabbit Polyclonal Antibody

Product data:

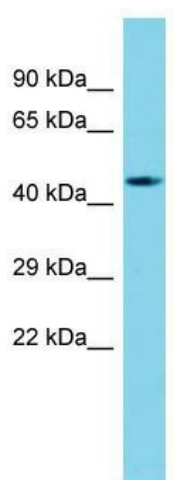
Product Type:	Primary Antibodies
Applications:	WB
Recommended Dilution:	WB
Reactivity:	Human
Host:	Rabbit
Isotype:	IgG
Clonality:	Polyclonal
Immunogen:	The immunogen for Anti-ARMC6 Antibody is: synthetic peptide directed towards the N-terminal region of Human ARMC6. Synthetic peptide located within the following region: VATLTQNADEADLTCSGIRCVRHACLKHEQNRQDLVKAGVLP LLTGAITH
Formulation:	Liquid. Purified antibody supplied in 1x PBS buffer with 0.09% (w/v) sodium azide and 2% sucrose. <i>Note that this product is shipped as lyophilized powder to China customers.</i>
Purification:	Affinity Purified
Conjugation:	Unconjugated
Storage:	Store at -20°C as received.
Stability:	Stable for 12 months from date of receipt.
Predicted Protein Size:	51 kDa
Gene Name:	armadillo repeat containing 6
Database Link:	NP_219483 Entrez Gene 93436 Human Q6NXE6
Background:	The function of this gene's protein product has not been determined. A related protein in mouse suggests that this protein has a conserved function. Two transcript variants encoding different isoforms have been found for this gene.
Synonyms:	R30923_1
Note:	Immunogen sequence homology: Human: 100%; Mouse: 100%; Dog: 93%; Pig: 93%; Rat: 93%; Horse: 93%; Bovine: 93%; Rabbit: 93%; Zebrafish: 93%; Guinea pig: 93%



[View online »](#)

Protein Families: Stem cell - Pluripotency

Product images:



Host: Rabbit; Target Name: ARMC6; Sample Tissue: Fetal Brain lysates; Antibody Dilution: 1.0 ug/ml.