

## Product datasheet for **TA333580**

### **C9orf123 (TMEM261) Rabbit Polyclonal Antibody**

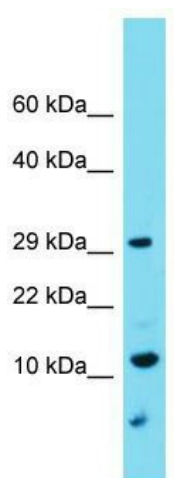
#### **Product data:**

Product Type:	Primary Antibodies
Applications:	WB
Recommended Dilution:	WB
Reactivity:	Human
Host:	Rabbit
Isotype:	IgG
Clonality:	Polyclonal
Immunogen:	The immunogen for Anti-C9orf123 Antibody is: synthetic peptide directed towards the C-terminal region of Human C9orf123. Synthetic peptide located within the following region: MGAGGYVYWVARKPMKMGYPSPWTITQMVIGLSIATWGIIVMADPKGKA
Formulation:	Liquid. Purified antibody supplied in 1x PBS buffer with 0.09% (w/v) sodium azide and 2% sucrose. <i>Note that this product is shipped as lyophilized powder to China customers.</i>
Purification:	Affinity Purified
Conjugation:	Unconjugated
Storage:	Store at -20°C as received.
Stability:	Stable for 12 months from date of receipt.
Predicted Protein Size:	12 kDa
Gene Name:	transmembrane protein 261
Database Link:	<a href="#">NP_219500</a> <a href="#">Entrez Gene 90871 Human</a> <a href="#">Q96GE9</a>
Background:	The function of this protein remains unknown.
Synonyms:	C9orf123
Note:	Immunogen sequence homology: Human: 100%; Rabbit: 85%; Mouse: 75%
Protein Families:	Transmembrane



[View online »](#)

## Product images:



Host: Rabbit; Target Name: C9orf123; Sample  
Tissue: U937 Whole Cell lysates; Antibody  
Dilution: 1.0 ug/ml.