

## Product datasheet for **TA333579**

### SLC38A5 Rabbit Polyclonal Antibody

#### Product data:

Product Type:	Primary Antibodies
Applications:	WB
Recommended Dilution:	WB
Reactivity:	Human
Host:	Rabbit
Isotype:	IgG
Clonality:	Polyclonal
Immunogen:	The immunogen for Anti-SLC38A5 Antibody: synthetic peptide directed towards the N terminal of human SLC38A5. Synthetic peptide located within the following region: GIRAYEQLGQRAFGPAGKVVVATVICLHNVGAMSSYLFIKSELPLVIGT
Formulation:	Liquid. Purified antibody supplied in 1x PBS buffer with 0.09% (w/v) sodium azide and 2% sucrose. <i>Note that this product is shipped as lyophilized powder to China customers.</i>
Purification:	Affinity Purified
Conjugation:	Unconjugated
Storage:	Store at -20°C as received.
Stability:	Stable for 12 months from date of receipt.
Predicted Protein Size:	51 kDa
Gene Name:	solute carrier family 38 member 5
Database Link:	<a href="#">NP_277053</a> <a href="#">Entrez Gene 92745 Human</a> <a href="#">Q8WUX1</a>
Background:	The protein encoded by this gene is a system N sodium-coupled amino acid transporter. The encoded protein transports glutamine, asparagine, histidine, serine, alanine, and glycine across the cell membrane, but does not transport charged amino acids, imino acids, or N-alkylated amino acids. Alternative splicing results in multiple transcript variants, but the full-length nature of some of these variants has not been determined. [provided by RefSeq, Aug 2013]



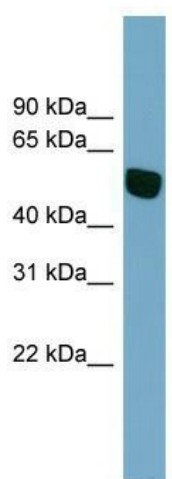
[View online »](#)

**Synonyms:** JM24; pp7194; SN2; SNAT5

**Note:** Immunogen sequence homology: Rat: 100%; Human: 100%; Mouse: 100%; Rabbit: 100%; Pig: 93%; Horse: 93%; Bovine: 93%; Dog: 86%; Guinea pig: 85%

**Protein Families:** Transmembrane

**Product images:**



WB Suggested Anti-SLC38A5 Antibody Titration:  
0.2-1 ug/ml; Positive Control: THP-1 cell lysate