

Product datasheet for **TA333578**

MYL12B Rabbit Polyclonal Antibody

Product data:

Product Type:	Primary Antibodies
Applications:	WB
Recommended Dilution:	WB
Reactivity:	Human
Host:	Rabbit
Isotype:	IgG
Clonality:	Polyclonal
Immunogen:	The immunogen for Anti-MYL12B Antibody is: synthetic peptide directed towards the C-terminal region of Human MYL12B. Synthetic peptide located within the following region: EKLNGTDPEDVIRNAFACFDEEATGTIQEDYLRELLTMMGDRFTDEEVDE
Formulation:	Liquid. Purified antibody supplied in 1x PBS buffer with 0.09% (w/v) sodium azide and 2% sucrose. <i>Note that this product is shipped as lyophilized powder to China customers.</i>
Purification:	Affinity Purified
Conjugation:	Unconjugated
Storage:	Store at -20°C as received.
Stability:	Stable for 12 months from date of receipt.
Predicted Protein Size:	20 kDa
Gene Name:	myosin light chain 12B
Database Link:	NP_291024 Entrez Gene 103910 Human O14950
Background:	The activity of nonmuscle myosin II is regulated by phosphorylation of a regulatory light chain, such as MRLC2. This phosphorylation results in higher MgATPase activity and the assembly of myosin II filaments.
Synonyms:	MLC-B; MRLC2

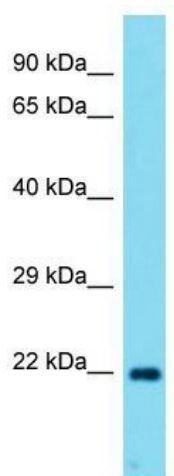


[View online »](#)

Note: Immunogen sequence homology: Dog: 100%; Pig: 100%; Rat: 100%; Goat: 100%; Horse: 100%; Human: 100%; Mouse: 100%; Sheep: 100%; Bovine: 100%; Rabbit: 100%; Guinea pig: 100%; Zebrafish: 86%

Protein Pathways: Focal adhesion, Leukocyte transendothelial migration, Regulation of actin cytoskeleton, Tight junction

Product images:



Host: Rabbit; Target Name: MYL12B; Sample Tissue: ACHN Whole Cell lysates; Antibody Dilution: 1.0 ug/ml. MYL12B is strongly supported by BioGPS gene expression data to be expressed in Human ACHN cells