

Product datasheet for **TA333577**

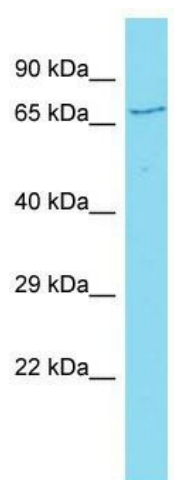
CCDC120 Rabbit Polyclonal Antibody

Product data:

Product Type:	Primary Antibodies
Applications:	WB
Recommended Dilution:	WB
Reactivity:	Human
Host:	Rabbit
Isotype:	IgG
Clonality:	Polyclonal
Immunogen:	The immunogen for Anti-CCDC120 Antibody is: synthetic peptide directed towards the C-terminal region of Human CCDC120. Synthetic peptide located within the following region: SGSQDSQMGFPRADPASDRASLFVARTRRSNSSEALLVDRAAGGGAGSPP
Formulation:	Liquid. Purified antibody supplied in 1x PBS buffer with 0.09% (w/v) sodium azide and 2% sucrose.
Purification:	Affinity Purified
Conjugation:	Unconjugated
Storage:	Store at -20°C as received.
Stability:	Stable for 12 months from date of receipt.
Predicted Protein Size:	67 kDa
Gene Name:	coiled-coil domain containing 120
Database Link:	NP_296375 Entrez Gene 90060 Human Q96HB5
Background:	This gene encodes a protein that contains a coiled-coil domain. Four alternatively spliced transcript variants that encode different protein isoforms have been described for this gene.
Synonyms:	JM11
Note:	Immunogen sequence homology: Human: 100%; Dog: 93%; Pig: 93%; Rat: 93%; Horse: 93%; Mouse: 93%; Bovine: 93%; Rabbit: 93%; Guinea pig: 93%; Zebrafish: 91%


[View online »](#)

Product images:



Host: Rabbit; Target Name: CCDC120; Sample
Tissue: HeLa Whole cell lysates; Antibody Dilution:
1.0 ug/ml.