

Product datasheet for **TA333576**

FGF13 Rabbit Polyclonal Antibody

Product data:

Product Type:	Primary Antibodies
Applications:	WB
Recommended Dilution:	WB
Reactivity:	Human
Host:	Rabbit
Isotype:	IgG
Clonality:	Polyclonal
Immunogen:	The immunogen for Anti-FGF13 Antibody: synthetic peptide directed towards the middle region of human FGF13. Synthetic peptide located within the following region: PKPLKVAMYKEPSLHDLTEFSRSGSGTPTKRSVSGVLNKGKSMHNEST
Formulation:	Liquid. Purified antibody supplied in 1x PBS buffer with 0.09% (w/v) sodium azide and 2% sucrose. <i>Note that this product is shipped as lyophilized powder to China customers.</i>
Purification:	Affinity Purified
Conjugation:	Unconjugated
Storage:	Store at -20°C as received.
Stability:	Stable for 12 months from date of receipt.
Predicted Protein Size:	21 kDa
Gene Name:	fibroblast growth factor 13
Database Link:	NP_378668 Entrez Gene 2258 Human Q92913



[View online »](#)

Background:

The protein encoded by this gene is a member of the fibroblast growth factor (FGF) family. FGF family members possess broad mitogenic and cell survival activities, and are involved in a variety of biological processes, including embryonic development, cell growth, morphogenesis, tissue repair, tumor growth, and invasion. This gene is located in a region on chromosome X, which is associated with Borjeson-Forssman-Lehmann syndrome (BFLS), making it a possible candidate gene for familial cases of the BFLS, and for other syndromal and nonspecific forms of X-linked mental retardation mapping to this region. Alternative splicing of this gene at the 5' end results in several transcript variants encoding different isoforms with different N-termini.

Synonyms:

FGF-13; FGF2; FHF-2; FHF2

Note:

Immunogen sequence homology: Dog: 100%; Pig: 100%; Rat: 100%; Horse: 100%; Human: 100%; Mouse: 100%; Bovine: 100%; Rabbit: 100%; Zebrafish: 100%; Guinea pig: 100%

Protein Families:

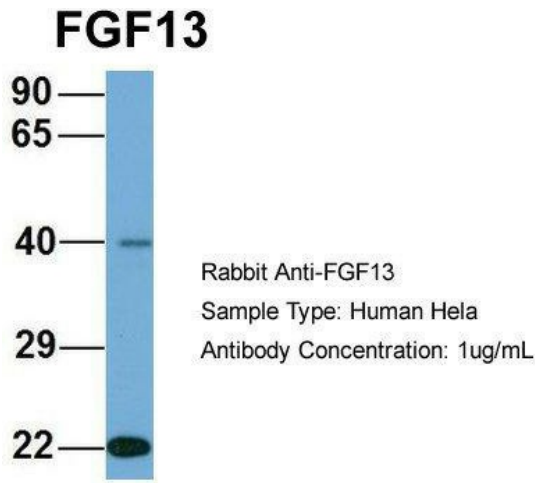
Secreted Protein

Protein Pathways:

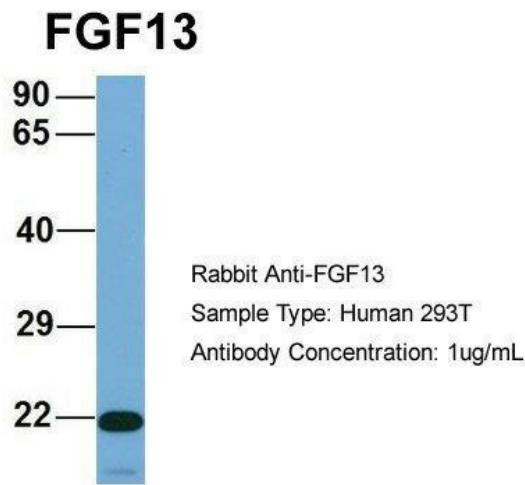
MAPK signaling pathway, Melanoma, Pathways in cancer, Regulation of actin cytoskeleton

Product images:

WB Suggested Anti-FGF13 Antibody Titration: 0.2-1 ug/ml; ELISA Titer: 1: 1562500; Positive Control: Jurkat cell lysate



Host: Rabbit; Target Name: FGF13; Sample Tissue: Human HeLa; Antibody Dilution: 1.0 ug/ml; FGF13 is supported by BioGPS gene expression data to be expressed in HeLa



Host: Rabbit; Target Name: FGF13; Sample Tissue: Human 293T; Antibody Dilution: 1.0 ug/ml; FGF13 is supported by BioGPS gene expression data to be expressed in HEK293T