

## Product datasheet for **TA333575**

### CCNDBP1 Rabbit Polyclonal Antibody

#### Product data:

Product Type:	Primary Antibodies
Applications:	WB
Recommended Dilution:	WB
Reactivity:	Human
Host:	Rabbit
Isotype:	IgG
Clonality:	Polyclonal
Immunogen:	The immunogen for Anti-CCNDBP1 Antibody: synthetic peptide directed towards the middle region of human CCNDBP1. Synthetic peptide located within the following region: NSAKLVSVLKKALEITKASHVTPQPEDSWIPLLNIAIDHCMNRIKELTQS
Formulation:	Liquid. Purified antibody supplied in 1x PBS buffer with 0.09% (w/v) sodium azide and 2% sucrose. <i>Note that this product is shipped as lyophilized powder to China customers.</i>
Purification:	Affinity Purified
Conjugation:	Unconjugated
Storage:	Store at -20°C as received.
Stability:	Stable for 12 months from date of receipt.
Predicted Protein Size:	26 kDa
Gene Name:	cyclin D1 binding protein 1
Database Link:	<a href="#">NP_411241</a> <a href="#">Entrez Gene 23582 Human</a> <a href="#">O95273</a>



[View online »](#)

**Background:**

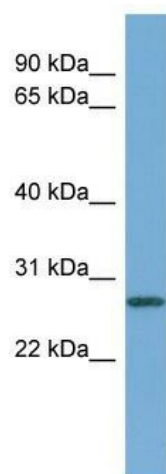
This gene was identified by the interaction of its gene product with Grap2, a leukocyte-specific adaptor protein important for immune cell signaling. The protein encoded by this gene was shown to interact with cyclin D. Transfection of this gene in cells was reported to reduce the phosphorylation of Rb gene product by cyclin D-dependent protein kinase, and inhibit E2F1-mediated transcription activity. This protein was also found to interact with helix-loop-helix protein E12 and is thought to be a negative regulator of liver-specific gene expression. Several alternatively spliced variants have been found for this gene.

**Synonyms:**

DIP1; GCIP

**Note:**

Immunogen sequence homology: Human: 100%; Bovine: 100%; Rabbit: 100%; Dog: 93%; Pig: 93%; Horse: 93%; Guinea pig: 93%; Rat: 92%; Mouse: 85%

**Product images:**

WB Suggested Anti-CCNDBP1 Antibody Titration:  
0.2-1 ug/ml; ELISA Titer: 1: 312500; Positive  
Control: Human Liver