

Product datasheet for **TA333574**

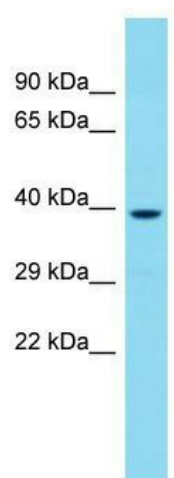
CCDC97 Rabbit Polyclonal Antibody

Product data:

Product Type:	Primary Antibodies
Applications:	WB
Recommended Dilution:	WB
Reactivity:	Human
Host:	Rabbit
Isotype:	IgG
Clonality:	Polyclonal
Immunogen:	The immunogen for Anti-CCDC97 Antibody is: synthetic peptide directed towards the C-terminal region of Human CCDC97. Synthetic peptide located within the following region: LDGKDGDFDYSTVDDNPDFDNLDIVARDEEERYFDEEEPEDAPSPELDGD
Formulation:	Liquid. Purified antibody supplied in 1x PBS buffer with 0.09% (w/v) sodium azide and 2% sucrose. <i>Note that this product is shipped as lyophilized powder to China customers.</i>
Purification:	Affinity Purified
Conjugation:	Unconjugated
Storage:	Store at -20°C as received.
Stability:	Stable for 12 months from date of receipt.
Predicted Protein Size:	39 kDa
Gene Name:	coiled-coil domain containing 97
Database Link:	NP_443080 Entrez Gene 90324 Human Q96F63
Background:	The function of this protein remains unknown.
Synonyms:	FLJ40267; MGC20255
Note:	Immunogen sequence homology: 0



[View online »](#)

Product images:

Host: Rabbit; Target Name: CCDC97; Sample
Tissue: 721_B Whole Cell lysates; Antibody
Dilution: 1.0 ug/ml.