

Product datasheet for TA333572

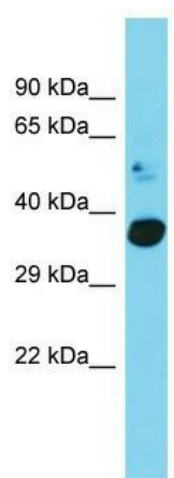
c20orf72 (MGME1) Rabbit Polyclonal Antibody

Product data:

Product Type:	Primary Antibodies
Applications:	WB
Recommended Dilution:	WB
Reactivity:	Human
Host:	Rabbit
Isotype:	IgG
Clonality:	Polyclonal
Immunogen:	The immunogen for Anti-C20orf72 Antibody is: synthetic peptide directed towards the C-terminal region of Human C20orf72. Synthetic peptide located within the following region: VVAYKDGSPAHPHFMDAELCSQYWTKWLLRLEEYTEKKNQNIQKPEYSE
Formulation:	Liquid. Purified antibody supplied in 1x PBS buffer with 0.09% (w/v) sodium azide and 2% sucrose. <i>Note that this product is shipped as lyophilized powder to China customers.</i>
Purification:	Affinity Purified
Conjugation:	Unconjugated
Storage:	Store at -20°C as received.
Stability:	Stable for 12 months from date of receipt.
Predicted Protein Size:	39 kDa
Gene Name:	mitochondrial genome maintenance exonuclease 1
Database Link:	NP_443097 Entrez Gene 92667 Human Q9BQP7
Background:	The function of this protein remains unknown.
Synonyms:	bA504H3.4; C20orf72; DDK1; MTDPS11
Note:	Immunogen sequence homology: Human: 100%; Bovine: 86%; Rabbit: 86%; Pig: 79%; Rat: 79%; Dog: 75%



[View online »](#)

Product images:

Host: Rabbit; Target Name: C20orf72; Sample Tissue: Fetal Heart lysates; Antibody Dilution: 1.0 ug/ml.