

Product datasheet for **TA333570**

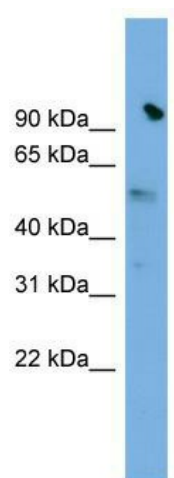
SLC25A25 Rabbit Polyclonal Antibody

Product data:

Product Type:	Primary Antibodies
Applications:	WB
Recommended Dilution:	WB
Reactivity:	Human
Host:	Rabbit
Isotype:	IgG
Clonality:	Polyclonal
Immunogen:	The immunogen for Anti-SLC25A25 Antibody: synthetic peptide directed towards the N terminal of human SLC25A25. Synthetic peptide located within the following region: KLSVFIPSQEFSTYRQWKQKIVQAGDKDLGQLDFEEFVHYLQDHEKKLR
Formulation:	Liquid. Purified antibody supplied in 1x PBS buffer with 0.09% (w/v) sodium azide and 2% sucrose. <i>Note that this product is shipped as lyophilized powder to China customers.</i>
Purification:	Affinity Purified
Conjugation:	Unconjugated
Storage:	Store at -20°C as received.
Stability:	Stable for 12 months from date of receipt.
Predicted Protein Size:	53 kDa
Gene Name:	solute carrier family 25 member 25
Database Link:	NP_443133 Entrez Gene 114789 Human Q6KCM7
Background:	The function remains unknown.
Synonyms:	MCSC; PCSCL; SCAMC-2
Note:	Immunogen sequence homology: Pig: 100%; Rat: 100%; Horse: 100%; Human: 100%; Mouse: 100%; Bovine: 100%; Guinea pig: 100%; Zebrafish: 85%
Protein Families:	Druggable Genome



[View online »](#)

Product images:

WB Suggested Anti-SLC25A25 Antibody Titration:
0.2-1 ug/ml; ELISA Titer: 1:62500; Positive Control:
HepG2 cell lysate