

Product datasheet for **TA333569**

SLC26A9 Rabbit Polyclonal Antibody

Product data:

Product Type:	Primary Antibodies
Applications:	WB
Recommended Dilution:	WB
Reactivity:	Human
Host:	Rabbit
Isotype:	IgG
Clonality:	Polyclonal
Immunogen:	The immunogen for Anti-SLC26A9 Antibody: synthetic peptide directed towards the middle region of human SLC26A9. Synthetic peptide located within the following region: LAKLSSTYGKIGVKVFLVNIHAQVYNDISHGGVFEDGSLECKHVFPSIHD
Formulation:	Liquid. Purified antibody supplied in 1x PBS buffer with 0.09% (w/v) sodium azide and 2% sucrose. <i>Note that this product is shipped as lyophilized powder to China customers.</i>
Purification:	Affinity Purified
Conjugation:	Unconjugated
Storage:	Store at -20°C as received.
Stability:	Stable for 12 months from date of receipt.
Predicted Protein Size:	87 kDa
Gene Name:	solute carrier family 26 member 9
Database Link:	NP_443166 Entrez Gene 115019 Human Q7LBE3
Background:	This gene is one member of a family of sulfate/anion transporter genes. Family members are well conserved in their genomic (number and size of exons) and protein (aa length among species) structures yet have markedly different tissue expression patterns.
Synonyms:	anion transporter; exchanger-9; member 9; OTTHUMP00000034236; OTTHUMP00000034326; solute carrier family 26

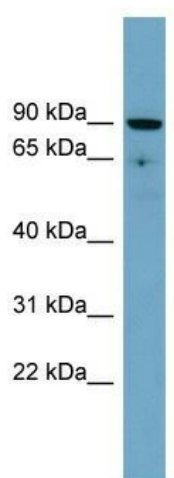


[View online »](#)

Note: Immunogen sequence homology: Pig: 100%; Horse: 100%; Human: 100%; Mouse: 100%; Guinea pig: 100%; Dog: 92%; Bovine: 92%; Rat: 85%; Rabbit: 85%

Protein Families: Transmembrane

Product images:



WB Suggested Anti-SLC26A9 Antibody Titration:
0.2-1 ug/ml; Positive Control: PANC1 cell lysate