

Product datasheet for TA333566

SLC32A1 Rabbit Polyclonal Antibody

Product data:

Product Type:	Primary Antibodies
Applications:	WB
Recommended Dilution:	WB
Reactivity:	Human
Host:	Rabbit
Isotype:	IgG
Clonality:	Polyclonal
Immunogen:	The immunogen for Anti-SLC32A1 Antibody: synthetic peptide directed towards the N terminal of human SLC32A1. Synthetic peptide located within the following region: GDEGAEAPVEGDIHYQRGSGAPLPPSGSKDQVGGGGEGFGHDKPKITAWE
Formulation:	Liquid. Purified antibody supplied in 1x PBS buffer with 0.09% (w/v) sodium azide and 2% sucrose. <i>Note that this product is shipped as lyophilized powder to China customers.</i>
Purification:	Affinity Purified
Conjugation:	Unconjugated
Storage:	Store at -20°C as received.
Stability:	Stable for 12 months from date of receipt.
Predicted Protein Size:	57 kDa
Gene Name:	solute carrier family 32 member 1
Database Link:	NP_542119 Entrez Gene 140679 Human Q9H598
Background:	SLC32A1 is involved in the uptake of GABA and glycine into the synaptic vesicles. The protein encoded by this gene is an integral membrane protein involved in gamma-aminobutyric acid (GABA) and glycine uptake into synaptic vesicles. The encoded protein is a member of amino acid/polyamine transporter family II.
Synonyms:	VGAT; VIAAT

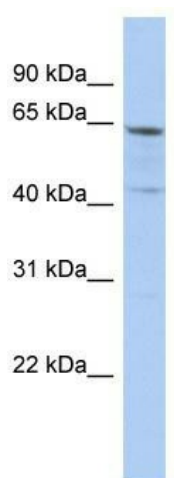


[View online »](#)

Note: Immunogen sequence homology: Human: 100%; Yeast: 100%; Dog: 93%; Pig: 93%; Rat: 93%; Horse: 93%; Mouse: 93%; Bovine: 93%; Guinea pig: 93%

Protein Families: Transmembrane

Product images:



WB Suggested Anti-SLC32A1 Antibody Titration:
0.2-1 ug/ml; ELISA Titer: 1:312500; Positive
Control: PANC1 cell lysate