

Product datasheet for **TA333565**

C20orf96 Rabbit Polyclonal Antibody

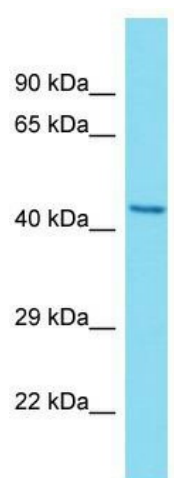
Product data:

Product Type:	Primary Antibodies
Applications:	WB
Recommended Dilution:	WB
Reactivity:	Human
Host:	Rabbit
Isotype:	IgG
Clonality:	Polyclonal
Immunogen:	The immunogen for Anti-C20orf96 Antibody is: synthetic peptide directed towards the N-terminal region of Human C20orf96. Synthetic peptide located within the following region: SIVQEFQVPDYVPWQQSKQETKPSLPPVQQANSLHTSKMKLTRVQPVF
Formulation:	Liquid. Purified antibody supplied in 1x PBS buffer with 0.09% (w/v) sodium azide and 2% sucrose. <i>Note that this product is shipped as lyophilized powder to China customers.</i>
Purification:	Affinity Purified
Conjugation:	Unconjugated
Storage:	Store at -20°C as received.
Stability:	Stable for 12 months from date of receipt.
Predicted Protein Size:	39 kDa
Gene Name:	chromosome 20 open reading frame 96
Database Link:	NP_542138 Entrez Gene 140680 Human Q9NUD7
Background:	The function of this protein remains unknown.
Synonyms:	dj1103G7.2
Note:	Immunogen sequence homology: Human: 100%; Dog: 86%; Bovine: 77%



[View online »](#)

Product images:



Host: Rabbit; Target Name: C20orf96; Sample
Tissue: MCF7 Whole Cell lysates; Antibody
Dilution: 1.0 ug/ml.