

Product datasheet for **TA333564**

WFDC3 Rabbit Polyclonal Antibody

Product data:

Product Type:	Primary Antibodies
Applications:	WB
Recommended Dilution:	WB
Reactivity:	Human
Host:	Rabbit
Isotype:	IgG
Clonality:	Polyclonal
Immunogen:	The immunogen for Anti-WFDC3 Antibody is: synthetic peptide directed towards the N-terminal region of Human WFDC3. Synthetic peptide located within the following region: SWITAGEHAKEGECPPHKNPCKELCQGDELCPAEQKCCTTGCGRICRDIP
Formulation:	Liquid. Purified antibody supplied in 1x PBS buffer with 0.09% (w/v) sodium azide and 2% sucrose. <i>Note that this product is shipped as lyophilized powder to China customers.</i>
Purification:	Affinity Purified
Conjugation:	Unconjugated
Storage:	Store at -20°C as received.
Stability:	Stable for 12 months from date of receipt.
Predicted Protein Size:	22 kDa
Gene Name:	WAP four-disulfide core domain 3
Database Link:	NP_542181 Entrez Gene 140686 Human Q8IUB2



[View online »](#)

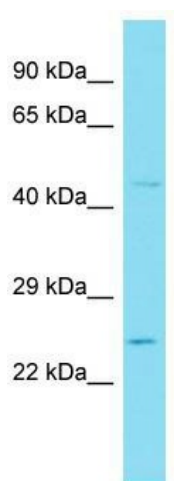
Background: This gene encodes a member of the WAP-type four-disulfide core (WFDC) domain family. The WFDC domain, or WAP signature motif, contains eight cysteines forming four disulfide bonds at the core of the protein, and functions as a protease inhibitor. The encoded protein contains four WFDC domains. Most WFDC genes are localized to chromosome 20q12-q13 in two clusters: centromeric and telomeric. This gene belongs to the telomeric cluster. Alternatively spliced transcript variants have been observed but their full-length nature has not been determined.

Synonyms: dj447F3.3; WAP14

Note: Immunogen sequence homology: Human: 100%

Protein Families: Secreted Protein

Product images:



Host: Rabbit; Target Name: WFDC3; Sample Tissue: 721_B Whole Cell lysates; Antibody Dilution: 1.0 ug/ml.