

## Product datasheet for **TA333563**

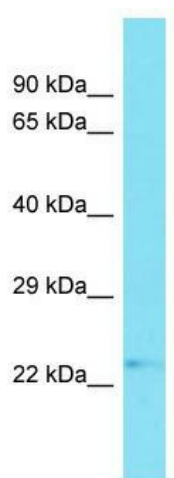
### **C20orf118 (TLDC2) Rabbit Polyclonal Antibody**

#### **Product data:**

<b>Product Type:</b>	Primary Antibodies
<b>Applications:</b>	WB
<b>Recommended Dilution:</b>	WB
<b>Reactivity:</b>	Human
<b>Host:</b>	Rabbit
<b>Isotype:</b>	IgG
<b>Clonality:</b>	Polyclonal
<b>Immunogen:</b>	The immunogen for Anti-C20orf118 Antibody is: synthetic peptide directed towards the N-terminal region of Human C20orf118. Synthetic peptide located within the following region: LPSQVEDTLSGEEGNEEEEEAAPDPAAAPEDPTVPQLTEASQVLSASE
<b>Formulation:</b>	Liquid. Purified antibody supplied in 1x PBS buffer with 0.09% (w/v) sodium azide and 2% sucrose.
<b>Purification:</b>	Affinity Purified
<b>Conjugation:</b>	Unconjugated
<b>Storage:</b>	Store at -20°C as received.
<b>Stability:</b>	Stable for 12 months from date of receipt.
<b>Predicted Protein Size:</b>	23 kDa
<b>Gene Name:</b>	TBC/LysM-associated domain containing 2
<b>Database Link:</b>	<a href="#">NP_542195</a> <a href="#">Entrez Gene 140711 Human</a> <a href="#">A0PIX2</a>
<b>Background:</b>	The function of this protein remains unknown.
<b>Synonyms:</b>	C20orf118
<b>Note:</b>	Immunogen sequence homology: Human: 100%; Rat: 92%; Mouse: 92%; Bovine: 79%; Rabbit: 77%



[View online »](#)

**Product images:**

Host: Rabbit; Target Name: C20orf118; Sample Tissue: Fetal Kidney lysates; Antibody Dilution: 1.0 ug/ml.