

## Product datasheet for **TA333561**

### TBX1 Rabbit Polyclonal Antibody

#### Product data:

Product Type:	Primary Antibodies
Applications:	IHC, WB
Recommended Dilution:	WB, IHC
Reactivity:	Human
Host:	Rabbit
Isotype:	IgG
Clonality:	Polyclonal
Immunogen:	The immunogen for Anti-TBX1 Antibody: synthetic peptide directed towards the C terminal of human TBX1. Synthetic peptide located within the following region: PNPELRLEAPGASEPLHHHPYKYPAAAYDHYLGAKSRPAPYPLPGLRGHG
Formulation:	Liquid. Purified antibody supplied in 1x PBS buffer with 0.09% (w/v) sodium azide and 2% sucrose. <i>Note that this product is shipped as lyophilized powder to China customers.</i>
Purification:	Affinity Purified
Conjugation:	Unconjugated
Storage:	Store at -20°C as received.
Stability:	Stable for 12 months from date of receipt.
Predicted Protein Size:	53 kDa
Gene Name:	T-box 1
Database Link:	<a href="#">NP_542378</a> <a href="#">Entrez Gene 6899 Human</a> <a href="#">O43435</a>



[View online »](#)

**Background:** TBX1 is a member of a phylogenetically conserved family of genes that share a common DNA-binding domain, the T-box. T-box genes encode transcription factors involved in the regulation of developmental processes. TBX1 product shares 98% amino acid sequence identity with the mouse ortholog. DiGeorge syndrome (DGS)/velocardiofacial syndrome (VCFS), a common congenital disorder characterized by neural-crest-related developmental defects, has been associated with deletions of chromosome 22q11.2, where TBX1 has been mapped. Studies using mouse models of DiGeorge syndrome suggest a major role for this gene in the molecular etiology of DGS/VCFS. Several alternatively spliced transcript variants encoding different isoforms have been described for this gene.

**Synonyms:** CAFS; CATCH22; CTHM; DGCR; DGS; DORV; TBX1C; TGA; VCF; VCFS

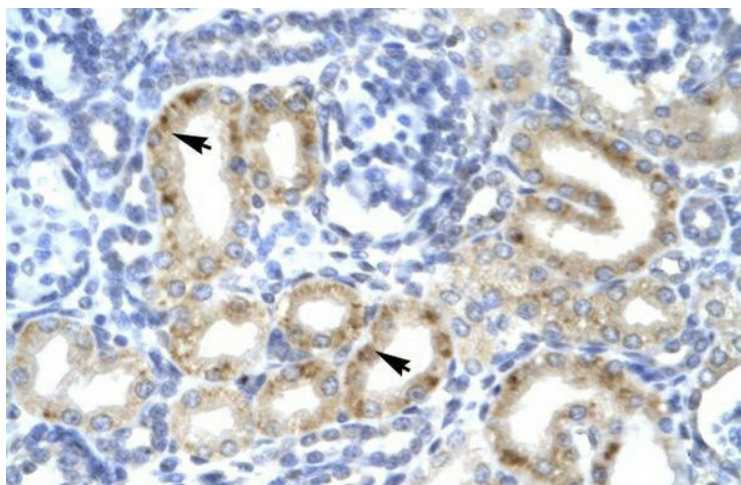
**Note:** Immunogen sequence homology: Dog: 100%; Pig: 100%; Rat: 100%; Human: 100%; Mouse: 100%; Rabbit: 100%; Guinea pig: 100%

**Protein Families:** Transcription Factors

### Product images:



WB Suggested Anti-TBX1 Antibody Titration: 5.0 ug/ml; Positive Control: Jurkat cell lysate



Human kidney