

Product datasheet for **TA333560**

CCDC34 Rabbit Polyclonal Antibody

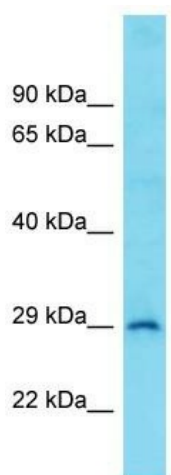
Product data:

Product Type:	Primary Antibodies
Applications:	WB
Recommended Dilution:	WB
Reactivity:	Human
Host:	Rabbit
Isotype:	IgG
Clonality:	Polyclonal
Immunogen:	The immunogen for Anti-CCDC34 Antibody is: synthetic peptide directed towards the C-terminal region of Human CCDC34. Synthetic peptide located within the following region: IGKEKEERDRLQLKALEELNQQLEKRKEMEEREKRKIIAEEKHKEWVQKK
Formulation:	Liquid. Purified antibody supplied in 1x PBS buffer with 0.09% (w/v) sodium azide and 2% sucrose. <i>Note that this product is shipped as lyophilized powder to China customers.</i>
Purification:	Affinity Purified
Conjugation:	Unconjugated
Storage:	Store at -20°C as received.
Stability:	Stable for 12 months from date of receipt.
Predicted Protein Size:	25 kDa
Gene Name:	coiled-coil domain containing 34
Database Link:	NP_542385 Entrez Gene 91057 Human Q96HJ3
Background:	The function of this protein remains unknown.
Synonyms:	L15; NY-REN-41; RAMA3
Note:	Immunogen sequence homology: Dog: 100%; Rat: 100%; Horse: 100%; Human: 100%; Mouse: 100%; Rabbit: 100%; Pig: 86%; Yeast: 85%; Zebrafish: 85%; Bovine: 79%; Guinea pig: 77%



[View online »](#)

Product images:



Host: Rabbit

Target Name: CCDC34

Sample Tissue: COLO205 Cell Lysate

Antibody Dilution: 1.0 μ g/ml

Host: Rabbit; Target Name: CCDC34; Sample Tissue: COLO205 Whole Cell lysates; Antibody Dilution: 1.0 ug/ml.