

Product datasheet for **TA333559**

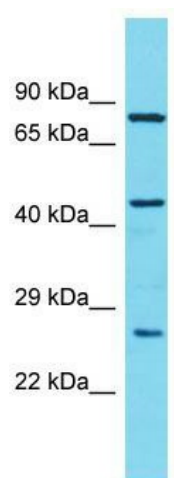
CCDC34 Rabbit Polyclonal Antibody

Product data:

Product Type:	Primary Antibodies
Applications:	WB
Recommended Dilution:	WB
Reactivity:	Human
Host:	Rabbit
Isotype:	IgG
Clonality:	Polyclonal
Immunogen:	The immunogen for Anti-CCDC34 Antibody is: synthetic peptide directed towards the middle region of Human CCDC34. Synthetic peptide located within the following region: NNQEEQKQVRLPESRLTPWEVWFIGKEKEERDRLQLKALEELNQQLEKRK
Formulation:	Liquid. Purified antibody supplied in 1x PBS buffer with 0.09% (w/v) sodium azide and 2% sucrose. <i>Note that this product is shipped as lyophilized powder to China customers.</i>
Purification:	Affinity Purified
Conjugation:	Unconjugated
Storage:	Store at -20°C as received.
Stability:	Stable for 12 months from date of receipt.
Predicted Protein Size:	43 kDa
Gene Name:	coiled-coil domain containing 34
Database Link:	NP_542385 Entrez Gene 91057 Human Q96HJ3
Background:	The function of this protein remains unknown.
Synonyms:	L15; NY-REN-41; RAMA3
Note:	Immunogen sequence homology: Human: 100%; Yeast: 100%; Dog: 86%; Rabbit: 86%; Pig: 79%; Rat: 79%; Horse: 79%; Mouse: 79%; Bovine: 79%



[View online »](#)

Product images:

Host: Rabbit; Target Name: CCDC34; Sample Tissue: OVCAR-3 Whole Cell lysates; Antibody Dilution: 1.0 ug/ml.