

## Product datasheet for **TA333558**

### **C11orf52 Rabbit Polyclonal Antibody**

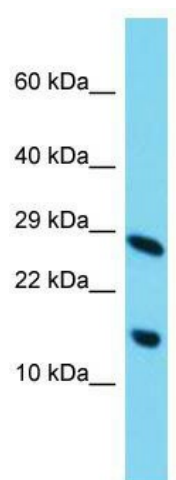
#### **Product data:**

Product Type:	Primary Antibodies
Applications:	WB
Recommended Dilution:	WB
Reactivity:	Human
Host:	Rabbit
Isotype:	IgG
Clonality:	Polyclonal
Immunogen:	The immunogen for Anti-C11orf52 Antibody is: synthetic peptide directed towards the C-terminal region of Human C11orf52. Synthetic peptide located within the following region: SNLHYADIQVCSRPHAREVKHVLHENATEYATLRFPQATPRYDSKNGTLV
Formulation:	Liquid. Purified antibody supplied in 1x PBS buffer with 0.09% (w/v) sodium azide and 2% sucrose.
Purification:	Affinity Purified
Conjugation:	Unconjugated
Storage:	Store at -20°C as received.
Stability:	Stable for 12 months from date of receipt.
Predicted Protein Size:	13 kDa
Gene Name:	chromosome 11 open reading frame 52
Database Link:	<a href="#">NP_542390</a> <a href="#">Entrez Gene 91894 Human</a> <a href="#">Q96A22</a>
Background:	The function of this protein remains unknown.
Synonyms:	FLJ25219; MGC14839; MGC131888
Note:	Immunogen sequence homology: Dog: 100%; Horse: 100%; Human: 100%; Rabbit: 100%; Pig: 93%; Bovine: 93%; Guinea pig: 93%; Rat: 86%; Mouse: 86%



[View online »](#)

## Product images:



Host: Rabbit; Target Name: C11orf52; Sample  
Tissue: HepG2 Whole Cell lysates; Antibody  
Dilution: 1.0 ug/ml.