

Product datasheet for **TA333556**

SLC35A4 Rabbit Polyclonal Antibody

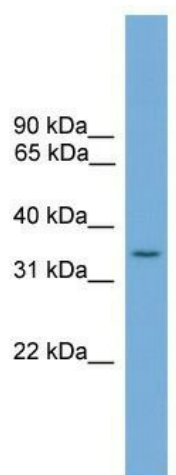
Product data:

Product Type:	Primary Antibodies
Applications:	WB
Recommended Dilution:	WB
Reactivity:	Human
Host:	Rabbit
Isotype:	IgG
Clonality:	Polyclonal
Immunogen:	The immunogen for Anti-SLC35A4 Antibody: synthetic peptide directed towards the middle region of human SLC35A4. Synthetic peptide located within the following region: GLALLLLMAAGACYAAGGLQVPGNTLPSPPPAAAASPMPLHITPLGLLLL
Formulation:	Liquid. Purified antibody supplied in 1x PBS buffer with 0.09% (w/v) sodium azide and 2% sucrose.
Purification:	Affinity Purified
Conjugation:	Unconjugated
Storage:	Store at -20°C as received.
Stability:	Stable for 12 months from date of receipt.
Predicted Protein Size:	34 kDa
Gene Name:	solute carrier family 35 member A4
Database Link:	NP_542401 Entrez Gene 113829 Human Q96G79
Background:	The function of this protein remains unknown.
Synonyms:	MGC2541
Note:	Immunogen sequence homology: Human: 100%; Yeast: 100%; Horse: 87%; Rabbit: 86%; Pig: 85%; Guinea pig: 85%
Protein Families:	Transmembrane



[View online »](#)

Product images:



WB Suggested Anti-SLC35A4 Antibody Titration:
0.2-1 ug/ml; Positive Control: Jurkat cell lysate