

Product datasheet for **TA333555**

IFFO (IFFO1) Rabbit Polyclonal Antibody

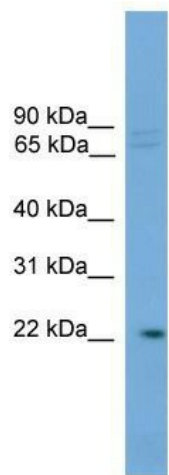
Product data:

Product Type:	Primary Antibodies
Applications:	WB
Recommended Dilution:	WB
Reactivity:	Human
Host:	Rabbit
Isotype:	IgG
Clonality:	Polyclonal
Immunogen:	The immunogen for Anti-IFFO1 Antibody: synthetic peptide directed towards the C terminal of human IFFO1. Synthetic peptide located within the following region: VQMETCRRLLITQSGDRKSPAFTAVPLSDPPPPPPSEAEEDSDRDVSSDSSMR
Formulation:	Liquid. Purified antibody supplied in 1x PBS buffer with 0.09% (w/v) sodium azide and 2% sucrose. <i>Note that this product is shipped as lyophilized powder to China customers.</i>
Purification:	Affinity Purified
Conjugation:	Unconjugated
Storage:	Store at -20°C as received.
Stability:	Stable for 12 months from date of receipt.
Predicted Protein Size:	23 kDa
Gene Name:	intermediate filament family orphan 1
Database Link:	NP_542769 Entrez Gene 25900 Human Q0D2I5



[View online »](#)

- Background:** This gene is a member of the intermediate filament family. Intermediate filaments are proteins which are primordial components of the cytoskeleton and nuclear envelope. The proteins encoded by the members of this gene family are evolutionarily and structurally related but have limited sequence homology, with the exception of the central rod domain. Alternative splicing has been observed for this gene and three transcript variants encoding different isoforms have been identified. Other alternatively spliced transcripts may exist, but their biological validity has not been confirmed.
- Synonyms:** DKFZp586l2223; FLJ20703; HOM-TES-103; HOM-TES-103 tumor antigen-like; IFFO; intermediate filament-like MGC:2625; intermediate filament family orphan; intermediate filament family orphan 1; MGC117359
- Note:** Immunogen sequence homology: Dog: 100%; Pig: 100%; Human: 100%; Bovine: 100%; Mouse: 93%; Rabbit: 93%; Guinea pig: 93%; Rat: 86%; Horse: 86%
- Protein Families:** Druggable Genome

Product images:

WB Suggested Anti-HOM-TES-103 Antibody
Titration: 0.2-1 ug/ml; ELISA Titer: 1: 62500;
Positive Control: HeLa cell lysate