

## Product datasheet for **TA333551**

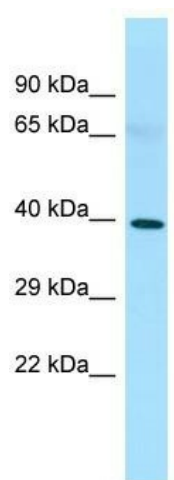
### Progesterin Receptor Beta (PAQR8) Rabbit Polyclonal Antibody

#### Product data:

Product Type:	Primary Antibodies
Applications:	WB
Recommended Dilution:	WB
Reactivity:	Human
Host:	Rabbit
Isotype:	IgG
Clonality:	Polyclonal
Immunogen:	The immunogen for Anti-PAQR8 Antibody is: synthetic peptide directed towards the C-terminal region of Human PAQR8. Synthetic peptide located within the following region: QGRQEIFLQRHGPLSVHMACLSFFFLAACSAATAALLRHVKARLTKKDS
Formulation:	Liquid. Purified antibody supplied in 1x PBS buffer with 0.09% (w/v) sodium azide and 2% sucrose.
Purification:	Affinity Purified
Conjugation:	Unconjugated
Storage:	Store at -20°C as received.
Stability:	Stable for 12 months from date of receipt.
Predicted Protein Size:	39 kDa
Gene Name:	progesterin and adipoQ receptor family member 8
Database Link:	<a href="#">NP_588608</a> <a href="#">Entrez Gene 85315 Human</a> <a href="#">Q8TEZ7</a>
Background:	PAQR8 is a steroid membrane receptor. It binds progesterone and may be involved in oocyte maturation.
Synonyms:	C6orf33; LMPB1; MPRB
Note:	Immunogen sequence homology: Dog: 100%; Horse: 100%; Human: 100%; Pig: 93%; Guinea pig: 93%; Rabbit: 92%; Rat: 86%; Mouse: 86%; Bovine: 86%
Protein Families:	Druggable Genome, Transmembrane


[View online »](#)

## Product images:



WB Suggested Anti-PAQR8 Antibody; Titration: 1.0 ug/ml; Positive Control: Fetal Lung