

## Product datasheet for **TA333550**

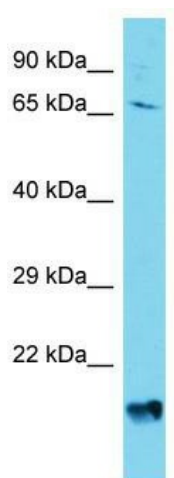
### AGAP8 (AGAP4) Rabbit Polyclonal Antibody

#### Product data:

Product Type:	Primary Antibodies
Applications:	WB
Recommended Dilution:	WB
Reactivity:	Human
Host:	Rabbit
Isotype:	IgG
Clonality:	Polyclonal
Immunogen:	The immunogen for Anti-AGAP4 Antibody is: synthetic peptide directed towards the C-terminal region of Human AGAP4. Synthetic peptide located within the following region: WPVELRKVMSSIGNDLANSIWEGSSQGQTKPSEKSTREEKERWIRSKYEE
Formulation:	Liquid. Purified antibody supplied in 1x PBS buffer with 0.09% (w/v) sodium azide and 2% sucrose.
Purification:	Affinity Purified
Conjugation:	Unconjugated
Storage:	Store at -20°C as received.
Stability:	Stable for 12 months from date of receipt.
Predicted Protein Size:	73 kDa
Gene Name:	ArfGAP with GTPase domain, ankyrin repeat and PH domain 4
Database Link:	<a href="#">NP_597703</a> <a href="#">Entrez Gene 119016 Human</a> <a href="#">Q96P64</a>
Background:	AGAP4 is a putative GTPase-activating protein.
Synonyms:	AGAP-4; AGAP-8; AGAP8; CTGLF1; CTGLF5; MRIP2
Note:	Immunogen sequence homology: Human: 100%; Dog: 86%; Pig: 86%; Rat: 86%; Horse: 86%; Mouse: 86%; Bovine: 86%; Guinea pig: 86%; Rabbit: 85%



[View online »](#)

**Product images:**

Host: Rabbit; Target Name: AGAP4; Sample Tissue: HepG2 Whole Cell lysates; Antibody Dilution: 1.0 ug/ml. AGAP4 is strongly supported by BioGPS gene expression data to be expressed in Human HepG2 cells