

## Product datasheet for **TA333549**

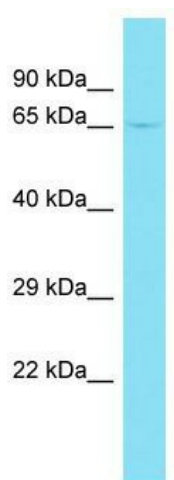
### AGAP11 Rabbit Polyclonal Antibody

#### Product data:

Product Type:	Primary Antibodies
Applications:	WB
Recommended Dilution:	WB
Reactivity:	Human
Host:	Rabbit
Isotype:	IgG
Clonality:	Polyclonal
Immunogen:	The immunogen for Anti-AGAP11 Antibody is: synthetic peptide directed towards the N-terminal region of Human AGAP11. Synthetic peptide located within the following region: TPICKQSMGWSNLTSEKGSDDPKGRKALESHADTIGSGRAIPIKQGMLL
Formulation:	Liquid. Purified antibody supplied in 1x PBS buffer with 0.09% (w/v) sodium azide and 2% sucrose.
Purification:	Affinity Purified
Conjugation:	Unconjugated
Storage:	Store at -20°C as received.
Stability:	Stable for 12 months from date of receipt.
Predicted Protein Size:	60 kDa
Gene Name:	ArfGAP with GTPase domain, ankyrin repeat and PH domain 11
Database Link:	<a href="#">NP_597704</a> <a href="#">Entrez Gene 119385 Human</a> <a href="#">Q8TF27</a>
Background:	AGAP11 is a putative GTPase-activating protein.
Synonyms:	KIAA1975
Note:	Immunogen sequence homology: Human: 100%



[View online »](#)

**Product images:**

Host: Rabbit; Target Name: AGAP11; Sample  
Tissue: HT1080 Whole Cell lysates; Antibody  
Dilution: 1.0 ug/ml. AGAP11 is supported by  
BioGPS gene expression data to be expressed in  
HT1080