

## Product datasheet for **TA333548**

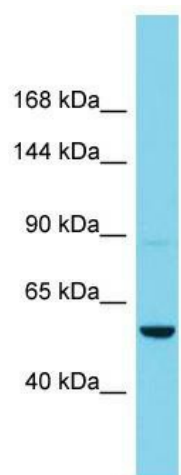
### AGAP11 Rabbit Polyclonal Antibody

#### Product data:

|                         |  |
|-------------------------|--|
| Product Type:           | Primary Antibodies   |
| Applications:           | WB   |
| Recommended Dilution:   | WB   |
| Reactivity:             | Human  |
| Host:                   | Rabbit   |
| Isotype:                | IgG  |
| Clonality:              | Polyclonal   |
| Immunogen:              | The immunogen for Anti-AGAP11 Antibody is: synthetic peptide directed towards the C-terminal region of Human AGAP11. Synthetic peptide located within the following region: LGQHLLRATADEDLRTAILLLAHGSREEVNETCGEGDGCTALHLACRKGN |
| Formulation:            | Liquid. Purified antibody supplied in 1x PBS buffer with 0.09% (w/v) sodium azide and 2% sucrose.  |
| Purification:           | Affinity Purified  |
| Conjugation:            | Unconjugated   |
| Storage:                | Store at -20°C as received.  |
| Stability:              | Stable for 12 months from date of receipt.   |
| Predicted Protein Size: | 60 kDa   |
| Gene Name:              | ArfGAP with GTPase domain, ankyrin repeat and PH domain 11   |
| Database Link:          | <a href="#">NP_597704</a><br><a href="#">Entrez Gene 119385 Human</a><br><a href="#">Q8TF27</a>  |
| Background:             | AGAP11 is a putative GTPase-activating protein.  |
| Synonyms:               | KIAA1975   |
| Note:                   | Immunogen sequence homology: Dog: 100%; Pig: 100%; Rat: 100%; Horse: 100%; Human: 100%; Mouse: 100%; Bovine: 100%; Rabbit: 100%; Guinea pig: 100%; Zebrafish: 93%  |



[View online »](#)

**Product images:**


Host: Rabbit; Target Name: AGAP11; Sample  
Tissue: HeLa Whole cell lysates; Antibody Dilution:  
1.0 ug/ml.